

MINUTES OF SOFT TECH V6 USERS GROUP MEETING #43

**Thursday 1 December 2011
Soft Tech Australia Office, Sydney**

Meeting opened 10.08 am

Attendance

- | | |
|---------------------------|--------------------|
| ● Capral | - Craig Johnson |
| | - Riri Hohaia |
| ● Alspec | - Derek Neuschulz |
| ● Boral Windows Dvn | - Mark Cork |
| | Julian Scarpantoni |
| | Mark Greenwood |
| | Donna Idiens |
| ● G.James | - Mike Eccles |
| | - Shane Baker |
| | - John Staunton |
| ● Micos | - Jay Phillips |
| ● Viridian | - Steve Gilvarry |
| ● AMA Windows | - Campbell Reeve |
| | Adam Smaller |
| ● Shelley Glass | - Francis Yen |
| ● C&L Glass | - Clem Gatti |
| ● Trio Designs | - Ibrahim Sankari |
| ● NuLook Windows | - Glen Loftus |
| ● Double Glazing Aus | - Trevor Dartnall |
| | Joven Bacusmo |
| | Gavin Wibberley |
| ● Aneeta | - Robert Langner |
| ● Lauries Windows & Doors | - Laurie Vaseo |
| ● Rylock | - Doug Andrews |
| ● Envirotech | - Steve Parkes |
| ● Darley Aluminium | - Graeme Butler |
| | - Tony Zhu |
| ● Trend Windows | - Joanne Celebrin |
| | Suman Singh |
| | Chantel da Fonseca |
| ● Soft Tech | - Anne Coulter |
| | John Ball |
| | Kerry Williams |
| | BJ Wilson |

Apologies

- | | |
|-------------------|-------------------|
| ● AWS (Vantage) | - Michelle Sealey |
| ● Seaview Joinery | - Shaun Forst |

Soft Tech Update - John Ball

Company Founder and Chairman



New Phillipines Customer - Seapac

- Aluminium & Glass Facades
- Windowwalls
- Supplier on many major construction projects



Fenestra (India) – dealer rollout

- Major Indian uPVC manufacturer
- Purchased 90+ licenses for V6 rollout to Initial dealers



Affinity partners with Soft Tech V6

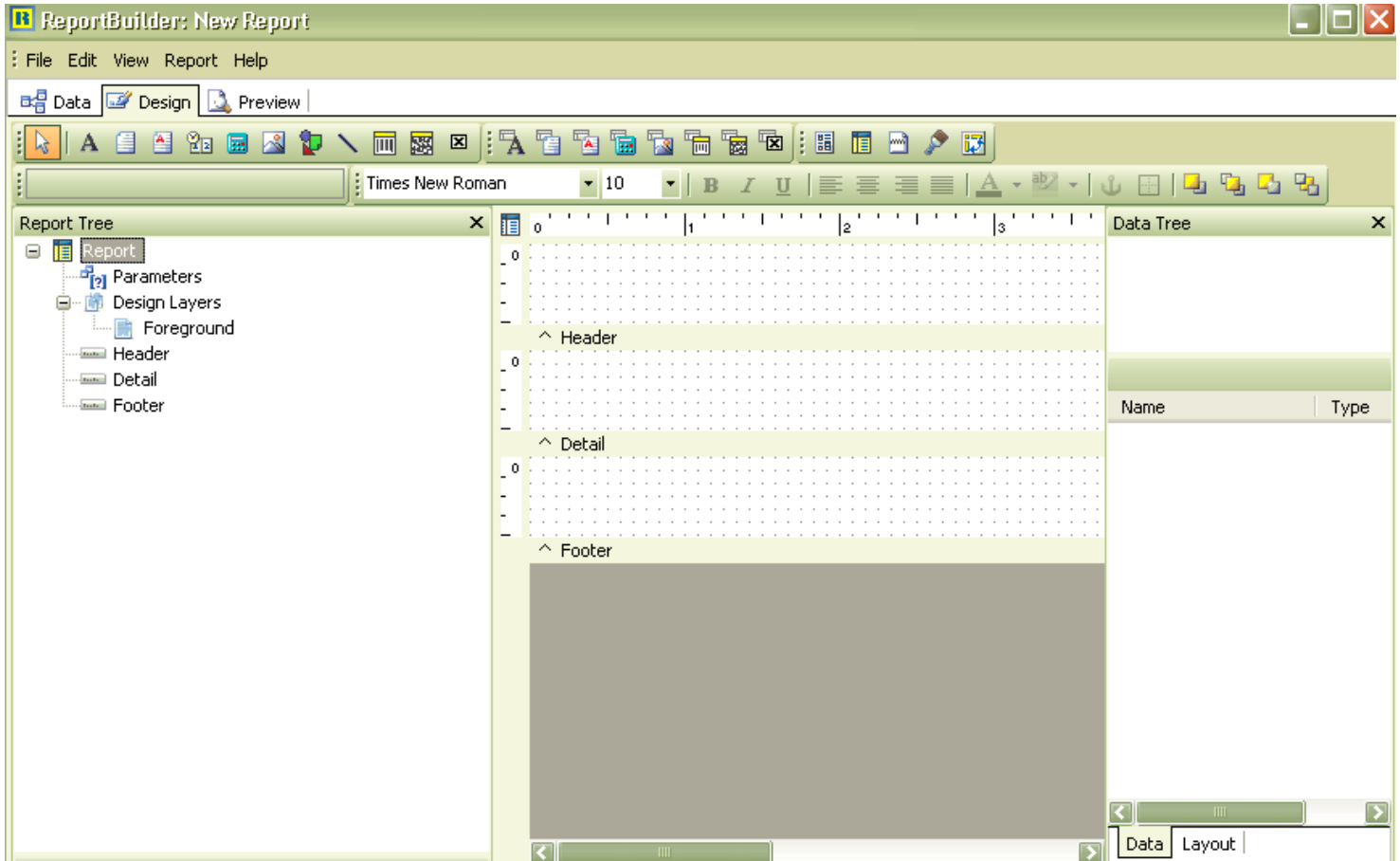
- Major WA aluminium window systems supplier
- Working with Soft Tech for use of V6 internally



2. Report Engine Change – V6 Version 3.6 – eta April 2012

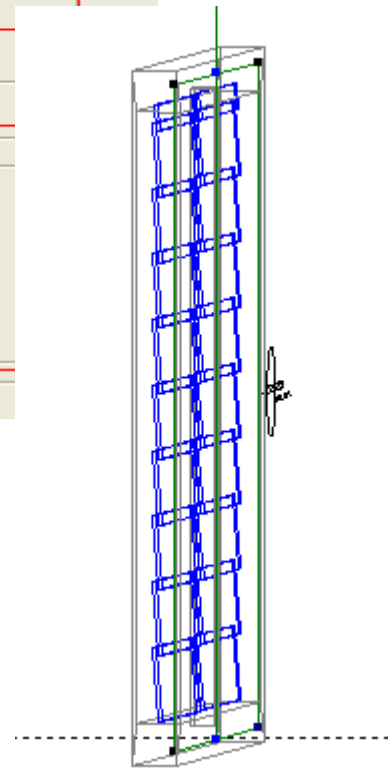
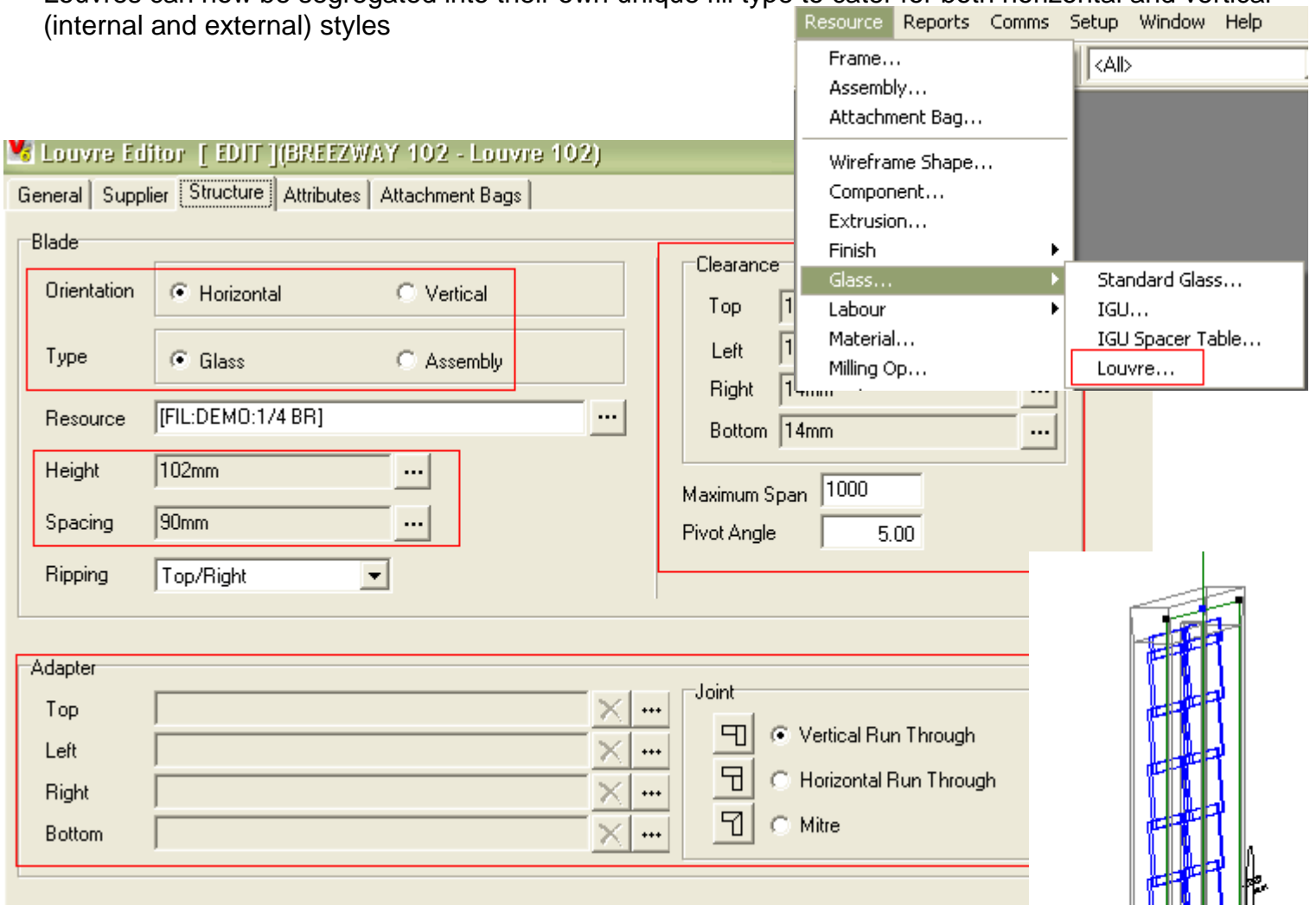
Soft Tech will be incorporating a new report engine shortly in 2012 – it is a Delphi product named ReportBuilder.

An earlier version of ReportBuilder was used to create Presentation Drawings.



3. New Glass/Fill Type – Louvres

Louvres can now be segregated into their own unique fill type to cater for both horizontal and vertical (internal and external) styles

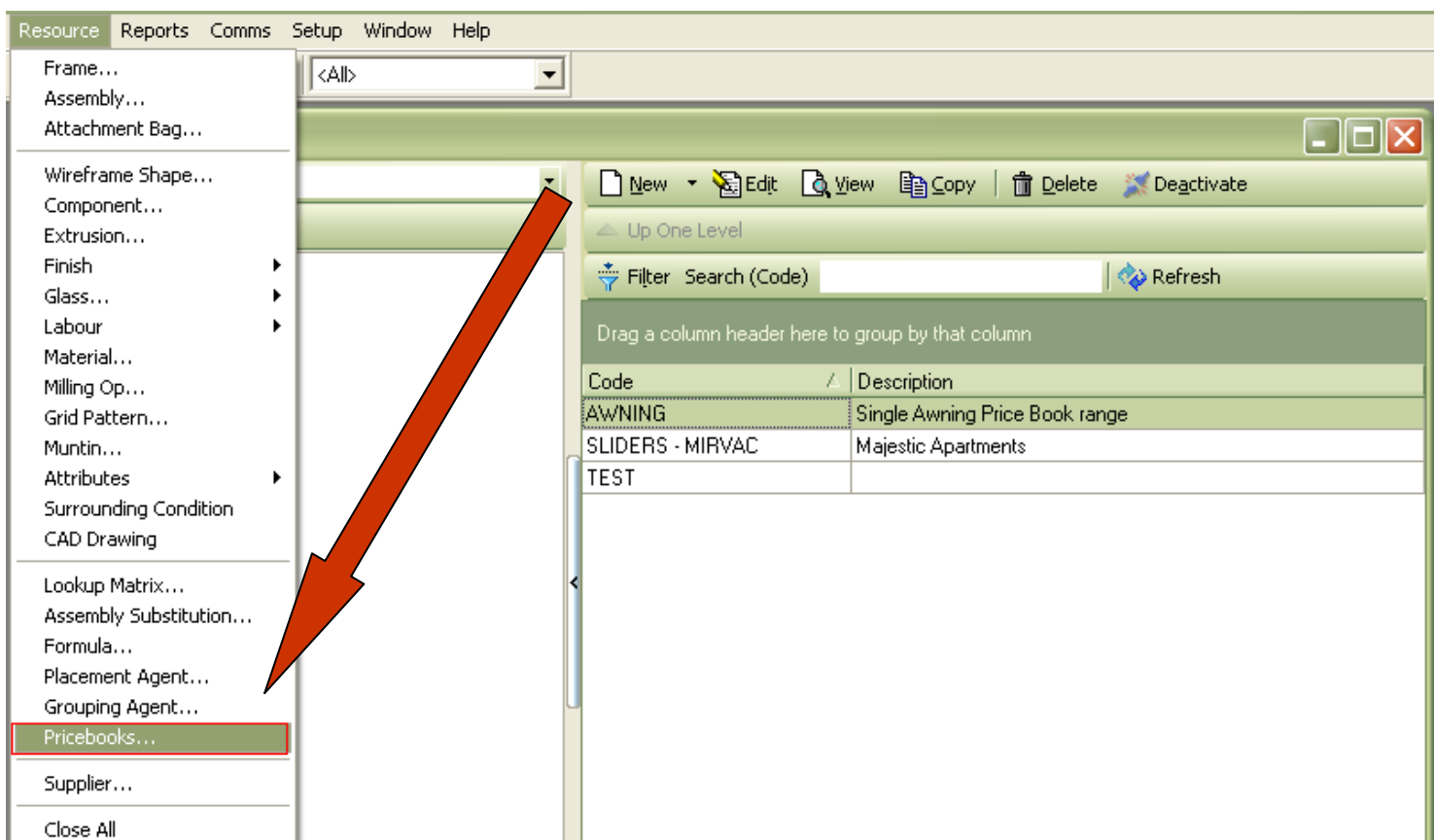


4. Price Book

The Price Book functionality has been expanded to allow users to create their own size range from standard frames -e.g. 0606, 0609, 0610, 0612

The Price Book will generate selling prices based on various extrusion finishes, glass types, reveal types, option selections, etc. as nominated by the user and export the values to a xls file.

GENERAL PRICE LIST		EFFECTIVE DATE: 24/11/2011				
TITLE:	Single Awning Range					
CUSTOMER:						
DWP:	500					
CODE	HEIGHT	WIDTH	Base Price	5mm	6.38	4mm
371 A-SASH	600 mm	1000 mm	\$146.78	\$46.58	\$65.93	\$39.56
371 A-SASH	900 mm	1000 mm	\$163.86	\$55.93	\$86.72	\$52.03
371 A-SASH	1000 mm	1000 mm	\$172.71	\$59.03	\$93.64	\$56.18
371 A-SASH	1300 mm	1200 mm	\$201.20	\$72.79	\$128.89	\$77.33
371 A-SASH	1200 mm	900 mm	\$178.41	\$63.06	\$100.67	\$60.40
371 A-SASH	1200 mm	1000 mm	\$184.10	\$65.26	\$107.48	\$64.49
371 A-SASH	1400 mm	1200 mm	\$206.90	\$75.90	\$136.61	\$81.96



V6 Technical Update

V6 Latest Versions

Current releases are –

2.10.1284	Aug 2008
3.20.0553	Sep 2008
3.30.0857	May 2010
3.40.1702	Nov 2011
3.50.1349	Aug 2011

Available from

ftp://V6_Aus:zx81@ftp.softtechnz.com

Enhancement Requests from Users

1. BOM TABs Display

Agreed to Submit

When you look at the BOM in a quote you get a series of 'tabs' for extrusions, components, glass etc.

In most cases, only some of these contain data.

For most users, some of these never contain data - Assemblies, Frames, Bags for example

Could we have the ability to choose which 'tabs' are displayed?

AC Note - User Group suggested an alternative – V6 only display the tabs which have values within.

Source	Quantity	EMark	Component	Description	Finish Color	Units	Part Code
F	6.00		1 8GA SCREWS	1" 8 GA SCREWS	NF (COMPONENTS)	Each	1 8GA SCREWS

Extrusions	Assemblies	Components	Glass	IGUs	Milling	Milling Extrusion	Milling Glass	Labour	Frames	Bags	Grid Pattern	Grid Bars	Cost	Louvres
------------	------------	------------	-------	------	---------	-------------------	---------------	--------	--------	------	--------------	-----------	------	---------

2. Statures at Frame Levels

Unless this is in a later version, I think it would be a great addition.

Can we add statuses to a frame type - so when you bring a particular frame type/frame in, the status on the quote item would change to whatever was on the frame type?

To Explain : We use statuses for Windows, Sliding Doors and Shopfront as they are made in different areas in the factory.

We then print by these statuses to separate the production. Default status could still be New Item so nothing else is affected if people don't want to use it.

Details | Options | Behaviour | Design | Presentation

Passed Over

Code: ST100 GASKET
Description: ST100 Gasket
Frame Type: Gasket
Create Date: Unknown
Modify Date: Unknown
Quantity: 1
Status: New Item
Stage: New Item
Item Number: Mixed
Customer Ref: In Production
Delivery Date: Ready for Dispatch
Comments: Completed
Cancelled

AC Note - The User Group suggested there were other features in V6 which could supply this to the user – strong recommendation for Quote Grouping to be evaluated (Demo on this at the next meeting)

3. LMX of frame sizes for quoting

Passed Over

We would love to use a LMX (or something similar) to store our standard Height & Width sizes for various standard frames configurations.

In that way we could add one frame code (e.g. AW-2) and be prompted for all the combination sizes available from the LMX

We would enter AW-2 and then prompted to select from a list of the codes below. Based on whichever code is selected the Height and Width fields would be automatically populated.

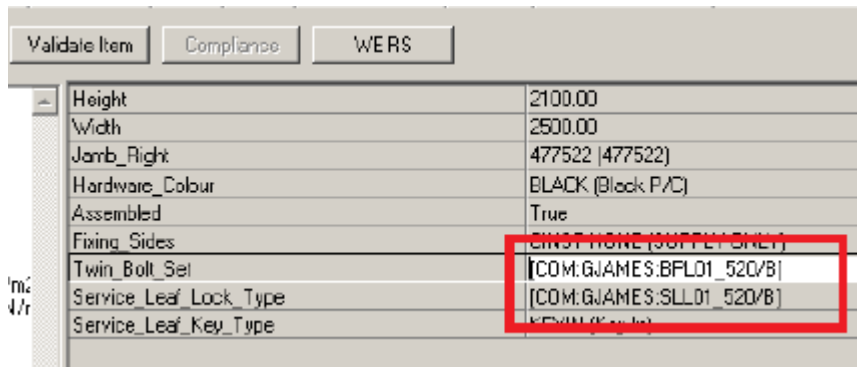
Code	Height	Width
0606	600	610
0609	600	910
0610	600	1000
0906	900	610
Etc.		

AC Note – the User Group suggested use of a Macro to achieve this instead of new functionality

4. Published Options for Attributes – Description

Agreed to Submit

It would be great to be able to display the description of resources instead of the resource code. For example at the moment if Picker is the value type of the attribute, the **code** is displayed in the quote options.



Attribute	Value
Height	2100.00
Width	2500.00
Jamb_Right	477522 (477522)
Hardware_Colour	BLACK (Black P/C)
Assembled	True
Fixing_Sides	CINST-NONE (SUPPLY ONLY)
Twin_Bolt_Set	[COM:GJAMES:BFL01_520/B]
Service_Leaf_Lock_Type	[COM:GJAMES:SLL01_520/B]
Service_Leaf_Key_Type	KEYIN (Key In)

The code does not usually mean anything to the user unless it's a frequently used one. So what I would like to see is an option to publish the Description, Code or both, so that the attribute would look similar to this.



Attribute	Value
Fixing_Sides	CINST-NONE (SUPPLY ONLY)
Twin_Bolt_Set	Handle In, No Key, Black
Service_Leaf_Lock_Type	[COM:GJAMES:SLL01_520/B]
Service_Leaf_Key_Type	KEYIN (Key In)

Library	Search (Code)
<All>	

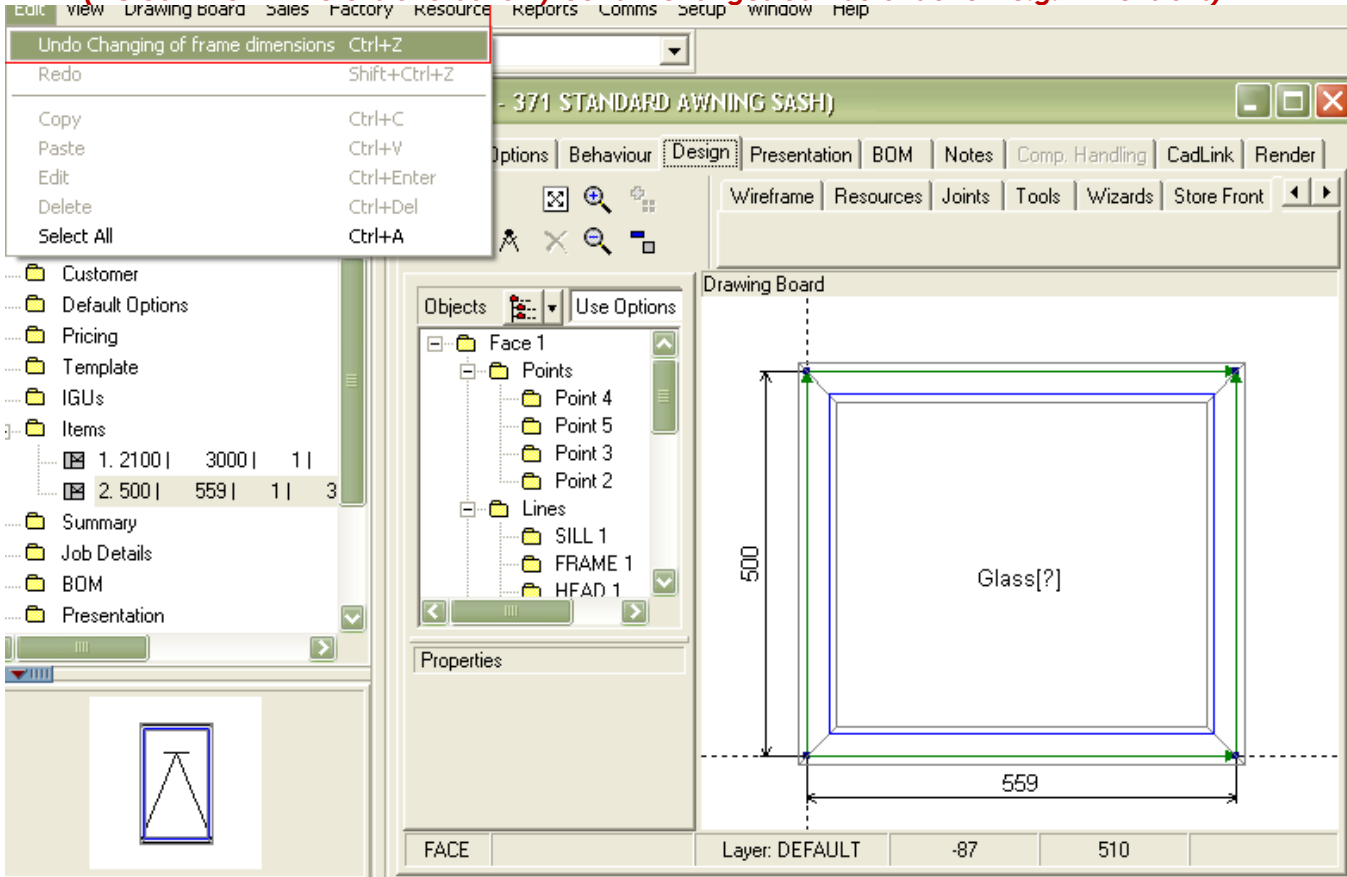
Family	Code	Description
All Libraries (filtered)	BFL01_520/B	Handle In, No Key, Black

5. Undo Button

**Agreed to Submit
Upon further details**

V6 needs an UNDO button !!!

(AC comment – there is one but only certain changes can be undone – e.g. Dimensions)



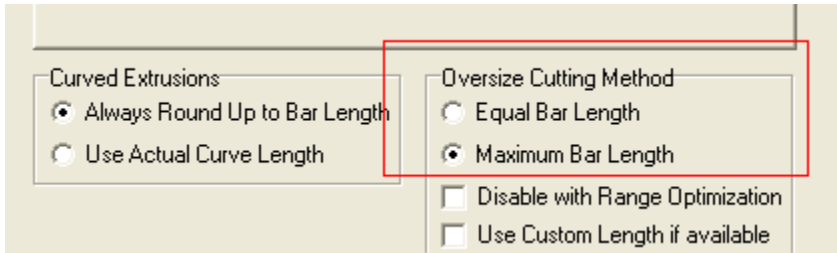
AC Note – Two different alternatives were suggested. One allowing the user to 'bookmark' a frame at particular point which could be reverted to.

The second being a nominated list of 'key' operations where an UNDO might be most helpful. The Group was asked to submit suggestions on what these 'key' operations might be.

6. Extrusion over-size cuts

Agreed to Submit

Setup Options gives you a choice of using Equal Bar Lengths or Maximum Bar Lengths for over-sized cuts.



This can be an issue, as for some extrusions (door head & sill) equal lengths are best - for others (subframing, fixing angles) longest length + remaining is best. A good sawman knows what is appropriate - others don't.

The oversize method is a system default - perhaps it should be available at extrusion level, as an override.

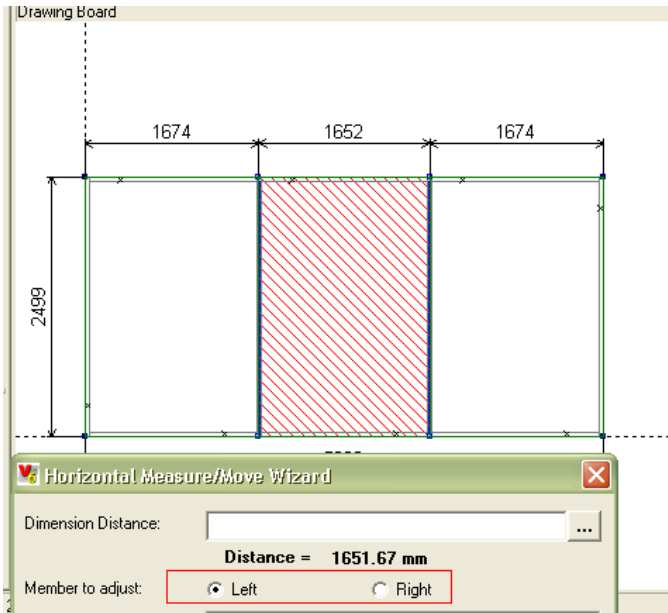
AC Note – The Group requested that the BOM should display which method was used against each extrusion.

7. Horizontal Dimension

Agreed to Submit

When you nominate a horizontal dimension the difference needs to be assigned to either the LEFT or RIGHT member (extrusion).

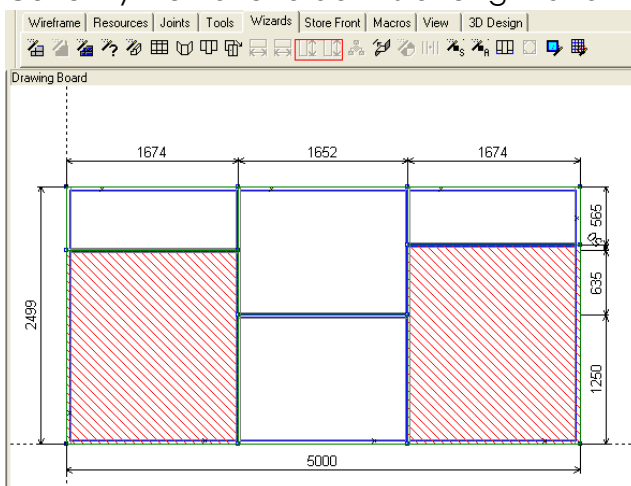
We would like an option to equally centre the dimension change between both LEFT and RIGHT member.



8. Vertical/Horizontal Dimension changes over multiple lights

Agreed to Submit

Why can't we change the Vertical or Horizontal Dimensions over multiple lights?
Currently we have to do this one light at a time which is very time consuming.



9. Suppression of Error messages

Agreed to Submit

When changing the classification on Extrusions the 'Update prices' prompt continually appears.

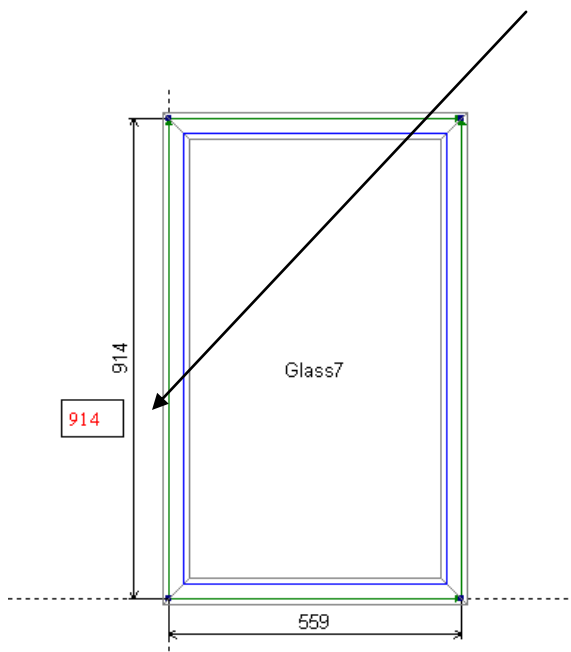
This is one example of where the change made does not bear any significance to the message prompt which occurs.

Could such prompts have a 'Suppress' option which would stay in effect for the length of the particular V6 session?

10. Display Vertical dimensions horizontally

Agreed to Submit

Could we please have an option to display vertical dimensions in a horizontal fashion



Next meeting

Thursday, 1 March 2012 (10am)
To be held at –

Soft Tech Australia P/L
10 Warby Street
Campbelltown NSW 2560