

MINUTES OF SOFT TECH V6 USERS GROUP MEETING #41

Thursday 2 June 2011

Web Meeting Only

Meeting opened 10.10am

Attendance

- | | |
|-----------------------|--|
| ● Capral | - Craig Johnson |
| ● Alspec | - Derek Neuschulz |
| ● G.James | - Shane Baker
- John Staunton |
| ● Micos | - Jay Phillips |
| ● Aneeta Windows | - Robert Langner |
| ● Rylock | - Doug Andrews |
| ● Sunbright Aluminium | - Peter Steicke |
| ● Seaview Joinery | - Shaun Forst |
| ● Trend Windows | - Joanne Celebrin
- Suman Singh

- Chantel da Fonseca |
| ● Soft Tech | - Anne Coulter
Kerry Williams |

Apologies

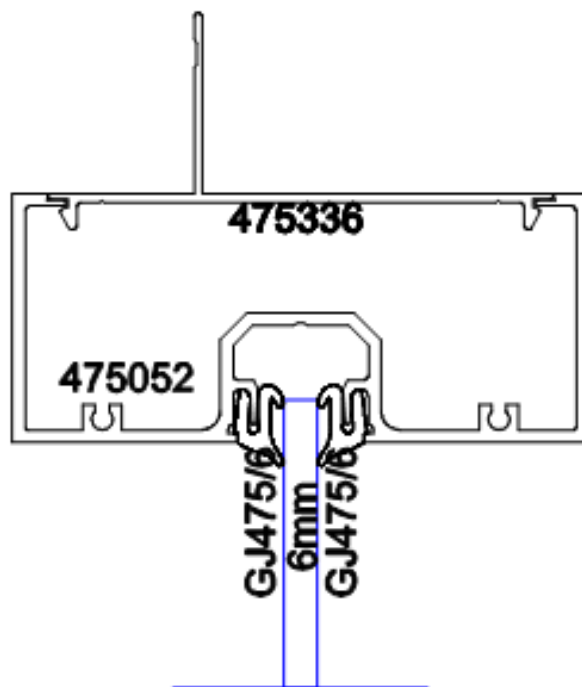
- | | |
|----------------------|----------------------|
| ● Canterbury Windows | - Lydia Amour-Naidoo |
| ● Trend Windows | - Ray Schroder |

Enhancement Requests – June 2011

1. CADLINK – show glass thickness

Agreed to Submit

Could we have a cadlink cut (optionally) show the glass thickness?

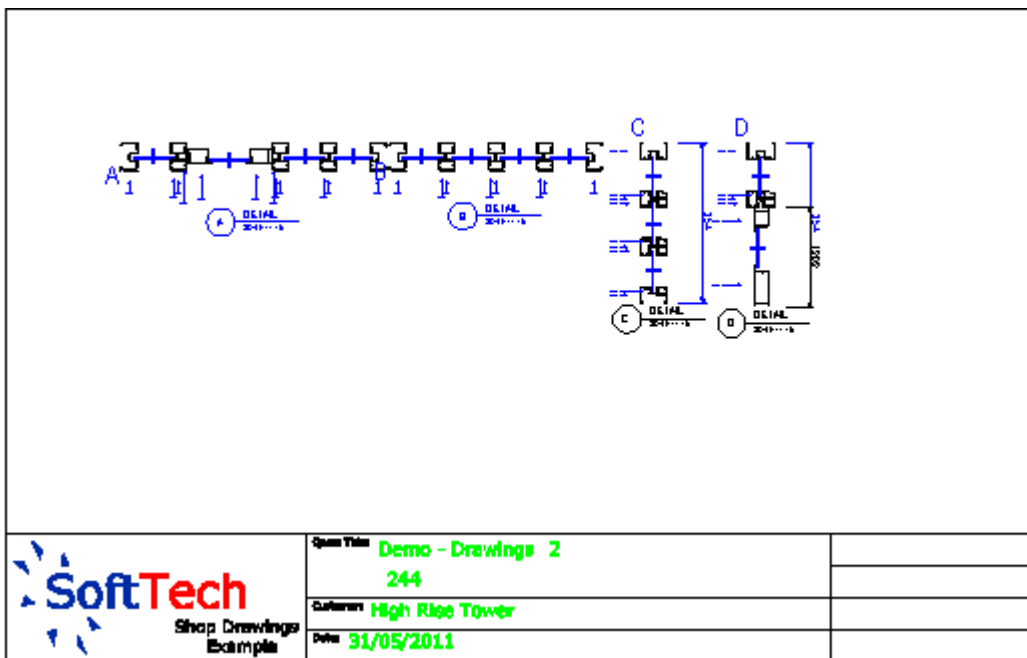


2. Shop Drawings – Grid Line

Agreed to Submit

When you are manually placing frames on a shop drawing it is difficult to align them neatly.

Would it be possible to have some sort of grid displayed (like the 'display grid' option on assemblies)?



3. Glass types – apply colour

Agreed to Submit

Can colours be allocated to different fill types so in the design tab (especially when you have 3,4,5 or more glass types) you can see what fill is applied where?

So Vision panels would show the colour you allocated to that glass type and spandrels a different colour etc.

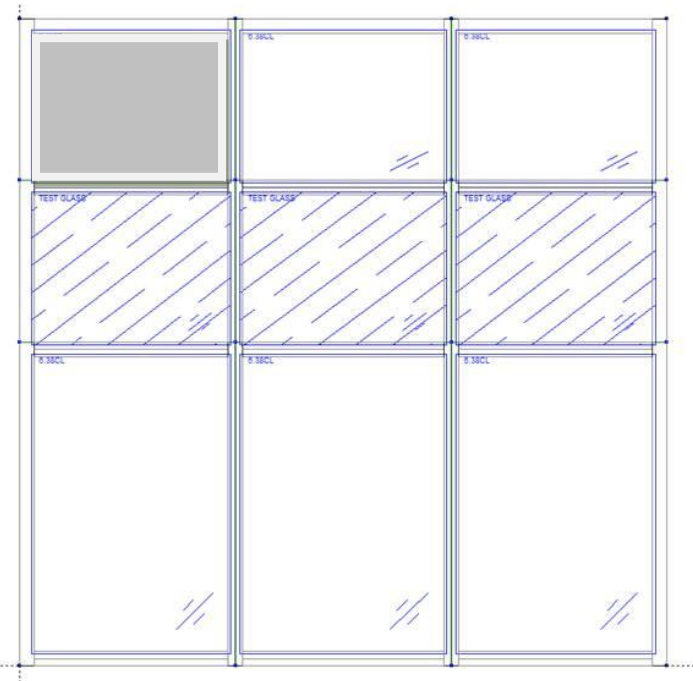
I know this would make my life and also my window/door schedules a lot easier to deal with.

There would probably need to be a colour palette to pick from on the glass resource.

And there would have to be an option to turn it on / off on reports as block colours may cause printing / visual issues.

Notes from Group Meeting - AS1288 display must have prominence

An ability to nominate the font size for Glass Codes would be an added advantage



4. Locked Quotes – Cancel Option

Agreed to Submit

When opening a quote which is already opened or locked you get the following message box.

Could the message box be changed to include a Cancel option so the quote doesn't have to be opened to close it?

Notes from Group Meeting – could it also add information about which user is locking the quote.



5. Autorun Macros 'hook' events

Agreed to Submit

I have been trying to work out a way of stopping the users from changing an item if the status is, say, 'invoiced'.

There doesn't seem to be an 'autorun macro "hook"' like **'OnBeforeItemEdit'** or **'OnAfterItemEdit'**.

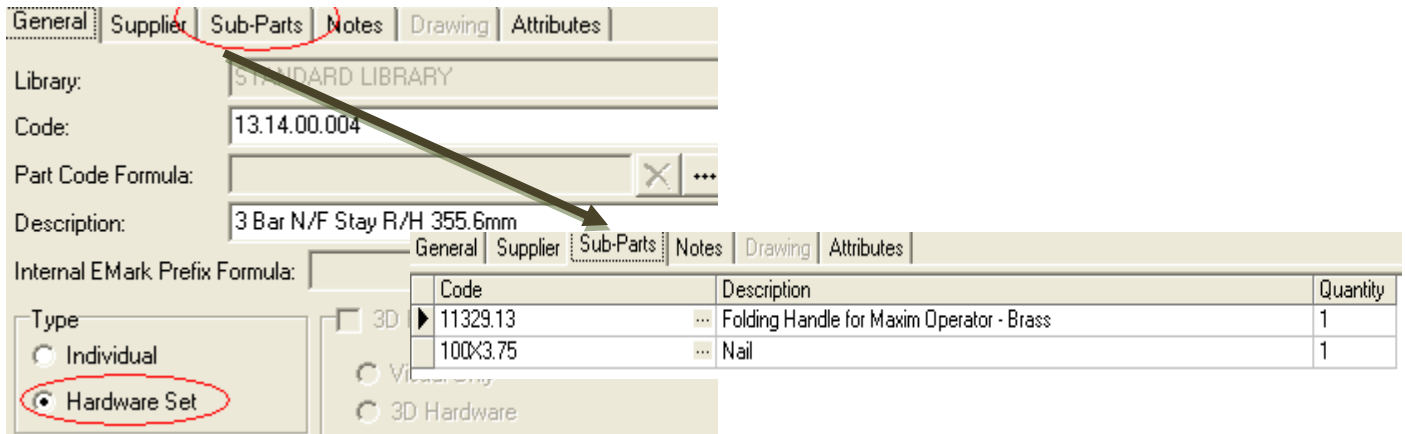
Currently, if the AS1288 validation fails when you exit an item, you get an error condition. It's that sort of thing that would be useful for other things.

Would you please get the guys to investigate how difficult it would be to add some additional 'hooks' at item level?

6. Components – Sub-Parts in BOM Display

Agreed to Submit

When a component is made up of other sub-parts, could we have **it expanded in the BOM display please?**



It may be necessary to make it clearer (in the bom) that a component was a part of a sub-set.

Source	Quantity	EMark	Glass	Description	Thickness	Height	Width	Part Code
F	1		6/4/6 IGU	IGU 6/4/6	36	740	940	6/4/6 IGU
F	2		6/4/6 IGU	IGU 6/4/6	36	511	838	6/4/6 IGU

Notes from Group Meeting – could the BOM for these sub-parts also be able to include their costs.

Could these sub-parts also be available to quick reports.

7. Quotes – View

Agreed to Submit

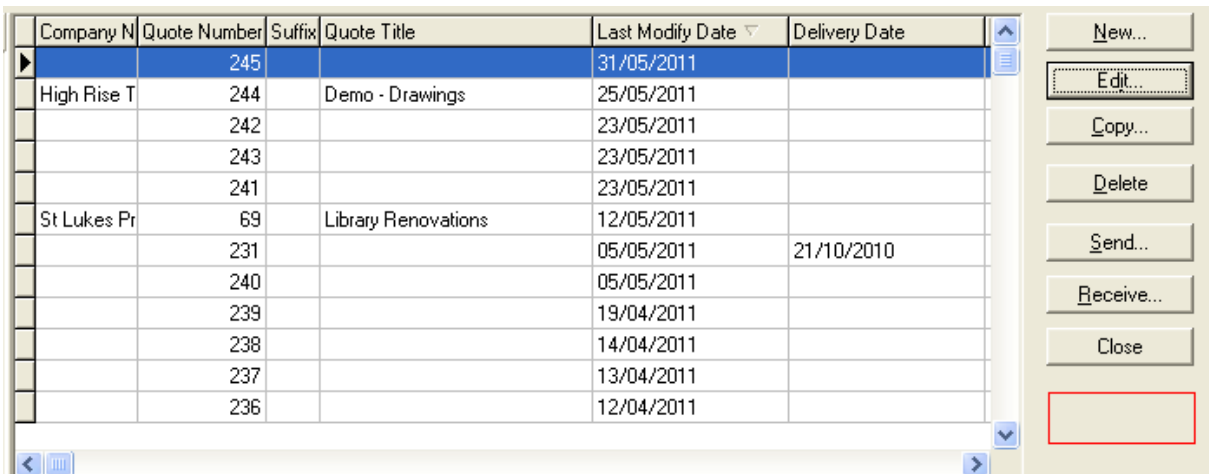
Could we have a 'view only' process for quotes? QuickView?

This is for users who don't want to change anything on the quote - just look at what is there.

It would be in addition to the current add, edit, delete functions.

What happens now is that the user uses the 'edit' function and after finishing, doesn't use the 'cancel' function but uses the 'OK'.

It is very easy to inadvertently trigger the 'dirty' flag for the quote, which means that it goes through the entire 'save' process, thus wasting time etc.



The screenshot shows a software interface with a table of quotes and a sidebar of action buttons. The table has columns for Company Name, Quote Number, Suffix, Quote Title, Last Modify Date, and Delivery Date. The first row is highlighted in blue. The sidebar contains buttons for New..., Edit..., Copy..., Delete, Send..., Receive..., and Close. A red box highlights a button in the sidebar that is currently empty.

Company Name	Quote Number	Suffix	Quote Title	Last Modify Date	Delivery Date
	245			31/05/2011	
High Rise T	244		Demo - Drawings	25/05/2011	
	242			23/05/2011	
	243			23/05/2011	
	241			23/05/2011	
St Lukes Pr	69		Library Renovations	12/05/2011	
	231			05/05/2011	21/10/2010
	240			05/05/2011	
	239			19/04/2011	
	238			14/04/2011	
	237			13/04/2011	
	236			12/04/2011	

Notes from Group Meeting – This should also be available in Process Groups.

There is concern that this QuickView should load current information only and not re-calculate BOM data (e.g. via optimisation) – although that may defeat the purpose of displaying current data which is a valid representation to the viewer.

8. Quotes – OK Button renamed

Agreed to Submit

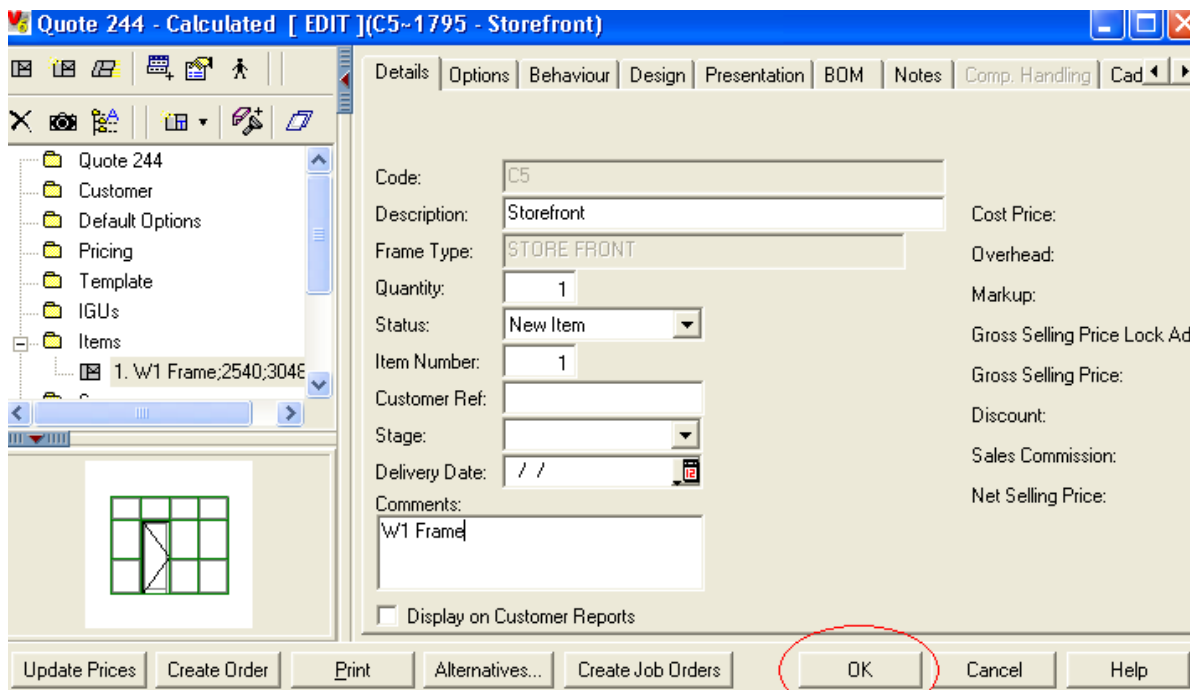
Could we have the 'OK' button for the quote edit renamed to 'Save & Exit' and the 'Cancel' button renamed to 'Exit/No Save'?

The 'Exit/No Save' would continue to warn the user that any changes won't be saved.

I imagine this would have to be an option or part of the **Technical Dictionary**

The reason for the request is that most users automatically use the 'OK' button without thinking, even when they haven't (intentionally) changed anything.

Notes from Group Meeting – This should be available only on the Quote Dialogue not other data points in V6.



9. Quote Design Board – Objects Window sizing

Agreed to Submit

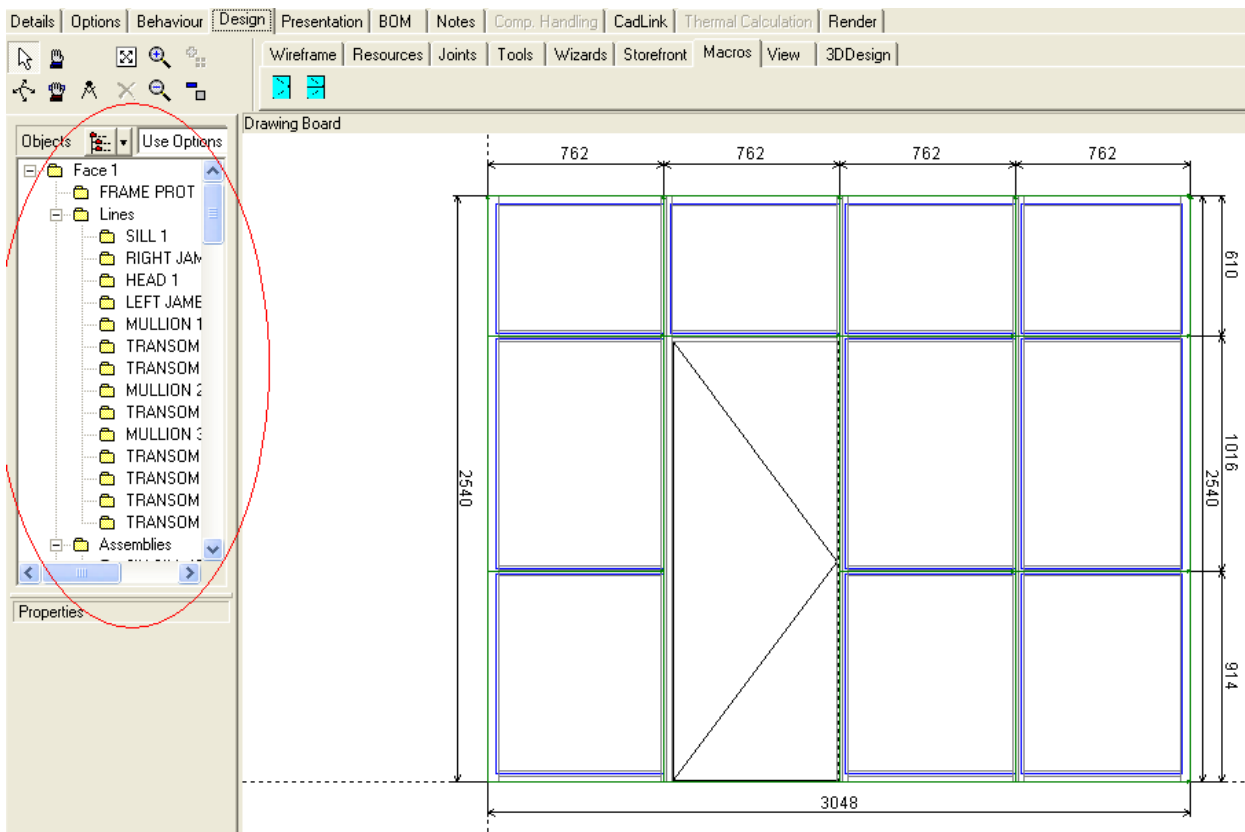
When you are editing a frame, and you go into the design tab, the 'Objects' window (left hand side) is too narrow to see the details properly.

We forever have to increase it by either

- using the horizontal scroll bar or
- dragging the line between it and the drawing board window

Can we please have the width of the window increased (at least doubled)?

Can it also retain this re-size as other user re-sized boxes do?



10. Glass Features in Quote Resource Over-ride

Agreed to Submit

It would be useful if the 'apply minimum cost area' & the associated area could be added to the **Fill & IGU resource override**.

Quote Display

Visible Fields

Header Tab

UDF3 UDF5 Delivery Date Default to Today

UDF4 UDF6

Pricing Tab

Job Details

Roundup Checkboxes UDF7

Labour Mechanism UDF8

Price Overrides Quote Classification

Quote Finish Rates Apply Minimum Glass Cost Area

Cost per m2

Currency: Australian dollar

Apply Minimum cost area 1.00 m2

Last In: 12.00

Standard: \$ 12.00 Use Last In

Price A:

Price B:

Likewise, when a quote IGU is created, can this flag & sqm be made available.

The reason for this is that, especially with bought-in IGU's, a minimum value may apply to either a) specific IGU configurations or b) specific IGU suppliers.

11. Design Board – Mirror (flip)

Passed over to the next Meeting – more consideration needed

We need a new tool that will take an existing frame and 'flip' its geometry to provide a mirror image.

Eg.

