



# DESIGN TRAINING MANUAL

# Summary of Chapters

---

## **Design Trainer - *A step by step guide to creating a Quote***

- 2006 Series – 100mm Centre Glazed Suite	4
- 3006 Series – Slider Frame Suite	21
<b>Cad Link</b>	<b>24</b>
<b>Shop Drawings</b>	<b>27</b>
<b>BOM</b>	<b>33</b>
<b>Printing a Quote</b>	<b>35</b>
<b>Fabrication Reports</b>	<b>37</b>

This trainer document is designed to guide you through the most relevant tools needed to design a frame in V6.

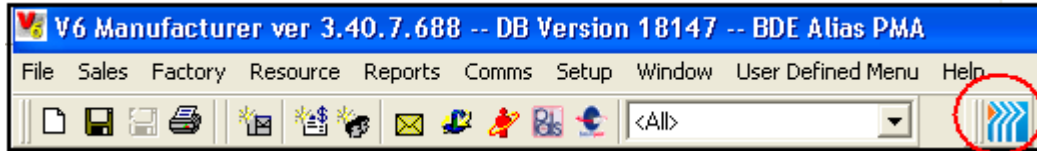
You will create a quote and use all of these tools to make a shopfront frame.

Throughout the trainer document instructions will appear in **BLUE** and information in **ORANGE ITALICS**

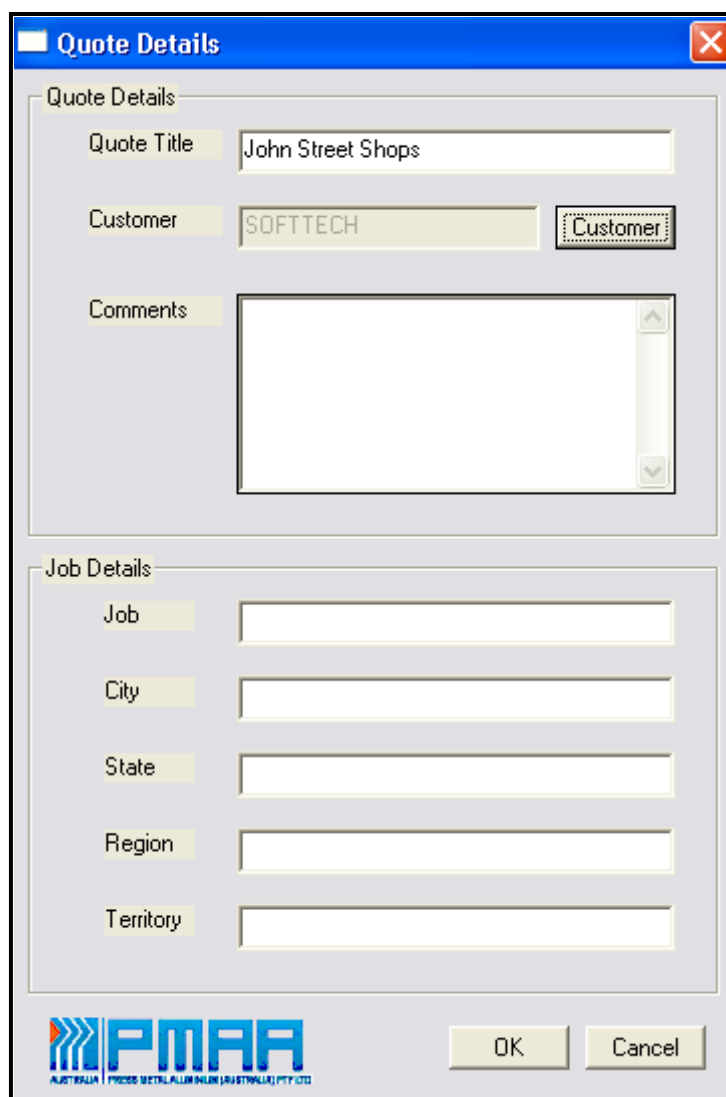
## 2006 Series – 100mm Centre Glazed Suite

## 1. CREATING A NEW QUOTE

1.a Select the PMAA Icon from the toolbar



1.b Complete the Quote Details box, select Customer, then click OK

A screenshot of the "Quote Details" dialog box. The dialog has a blue title bar with a close button. It is divided into two sections: "Quote Details" and "Job Details".  
In the "Quote Details" section:  
- "Quote Title" is a text field containing "John Street Shops".  
- "Customer" is a text field containing "SOFTTECH" and a "Customer" button to its right.  
- "Comments" is a large empty text area with scrollbars.  
In the "Job Details" section:  
- "Job", "City", "State", "Region", and "Territory" are each followed by an empty text field.  
At the bottom of the dialog, there is a PMAA logo on the left and "OK" and "Cancel" buttons on the right.

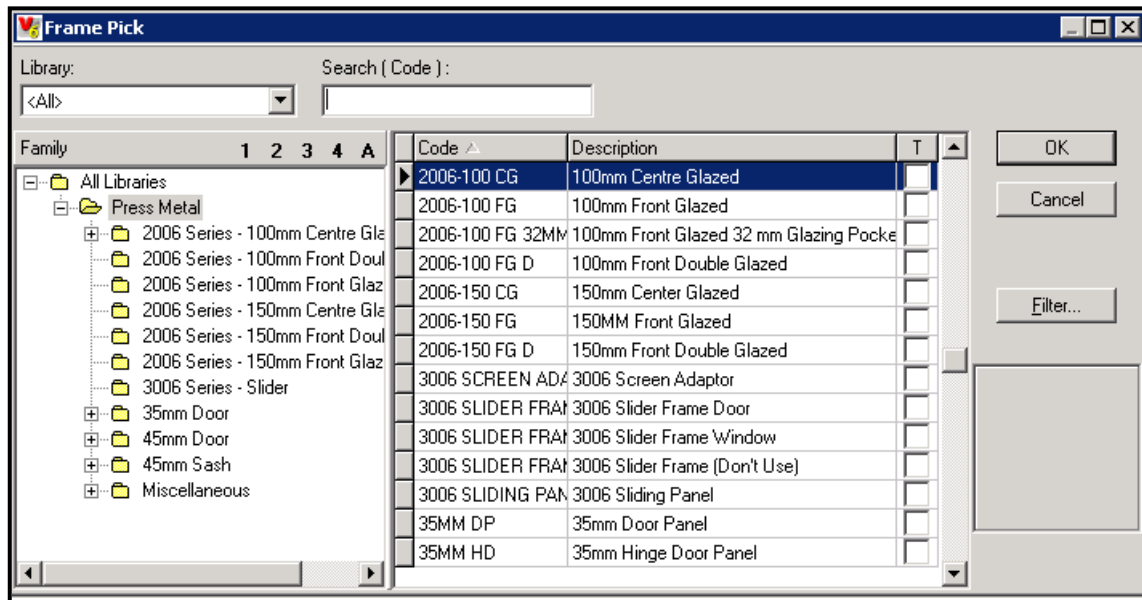
## ADDING A FRAME TO THE QUOTE

2.a Select the PMAA Icon again to add a Frame



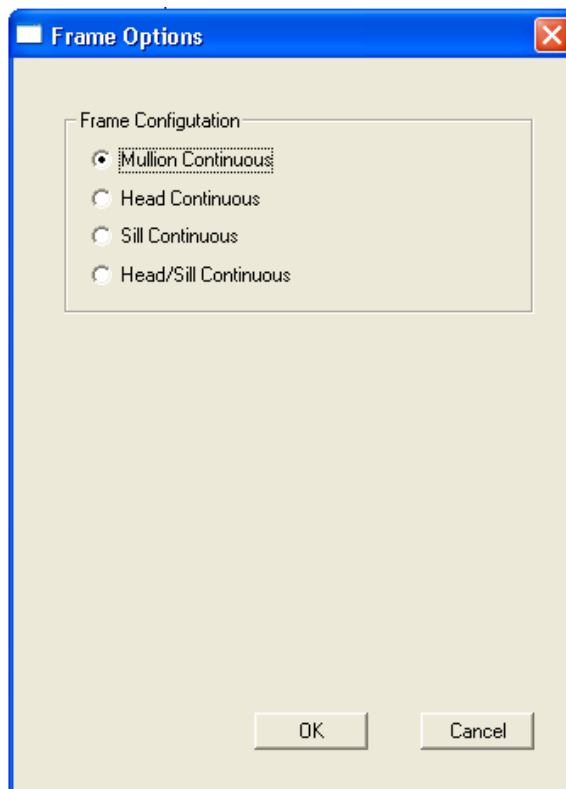
2.b Select firstly from the Left side of the picker the 2006 Series Centre Glaze 100mm Suite, and then the 100mm Centre Glazed from the Right side.

*A thumbnail picture of the 2006 Series is shown on the right-hand side of the screen*

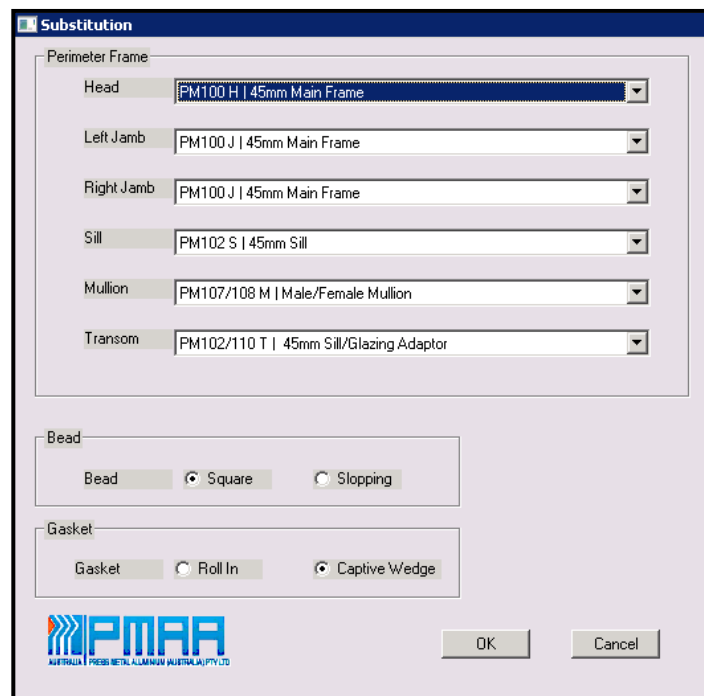


Click OK

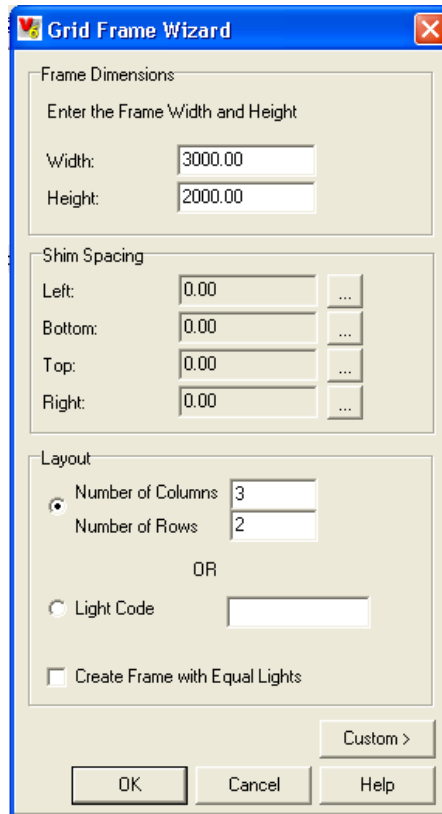
2.c Select Frame Configuration, then click OK



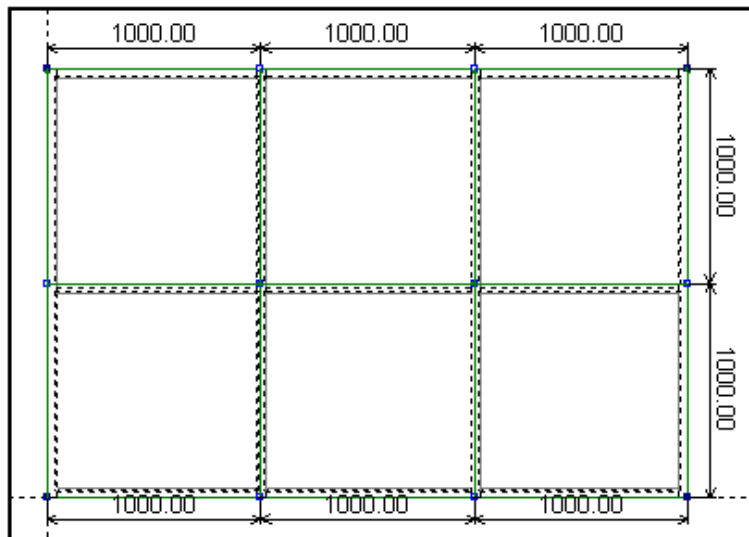
2.d Select Frame and Bead types, click OK



2.e Enter a Width of 3000mm and a Height of 2000mm into the Grid Frame Wizard. Enter 3 Columns and 2 Rows. Then Click OK

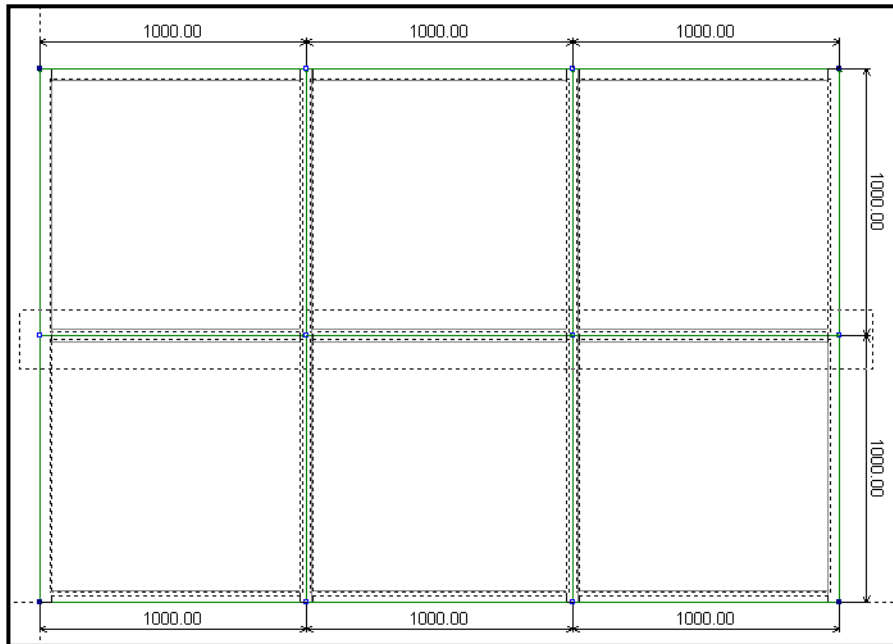


*Your frame will now appear with all Vertical and Horizontal dimensions showing.*

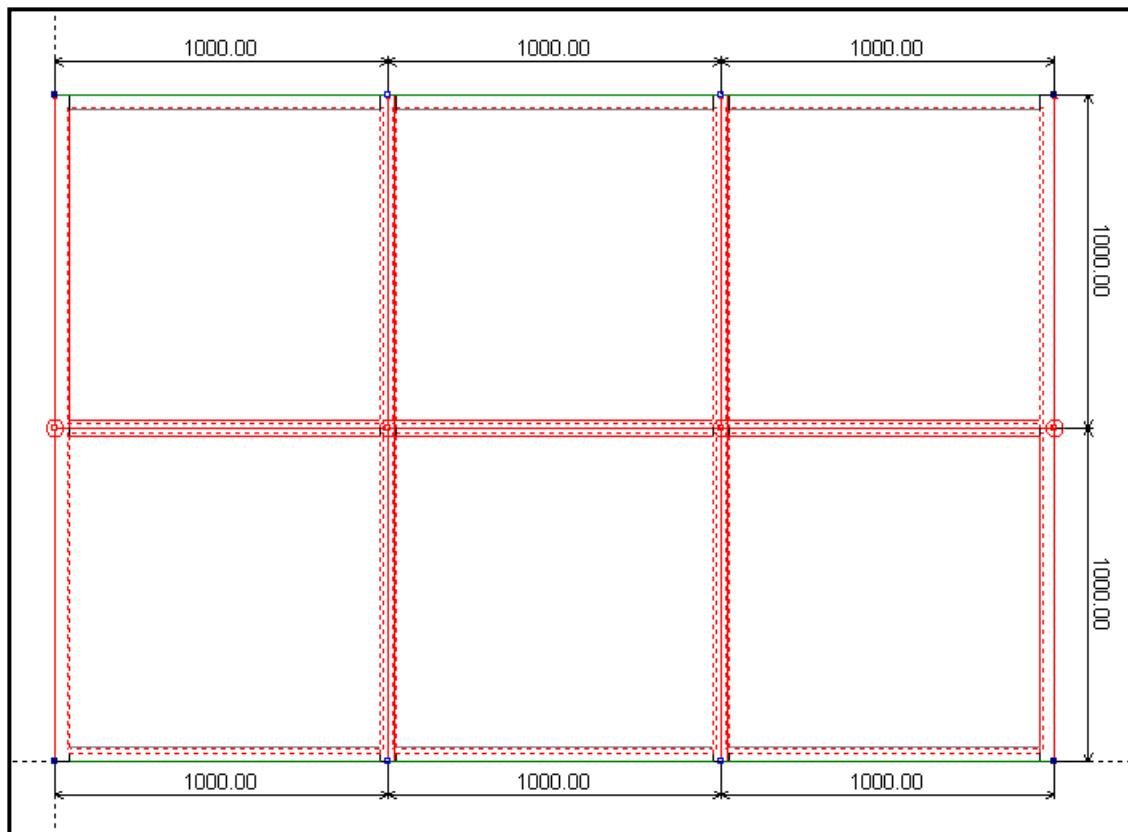


### 3. CHANGING THE TRANSOM POSITION

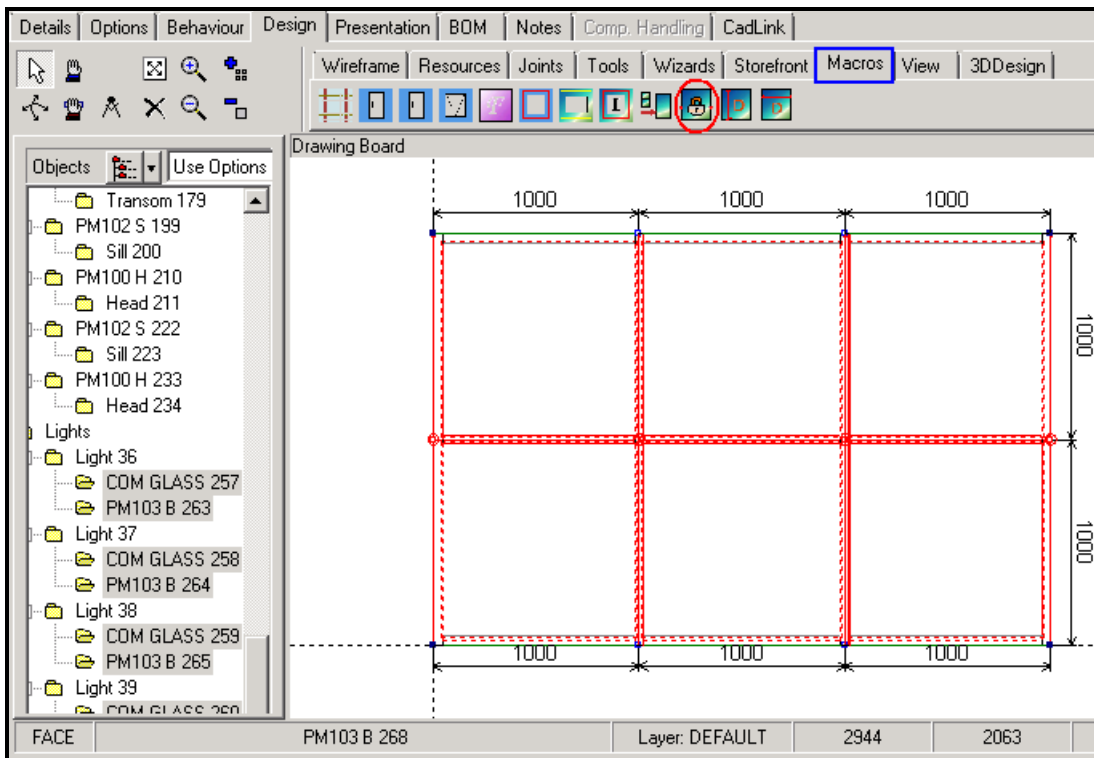
3.a Firstly, drag a box around the transom



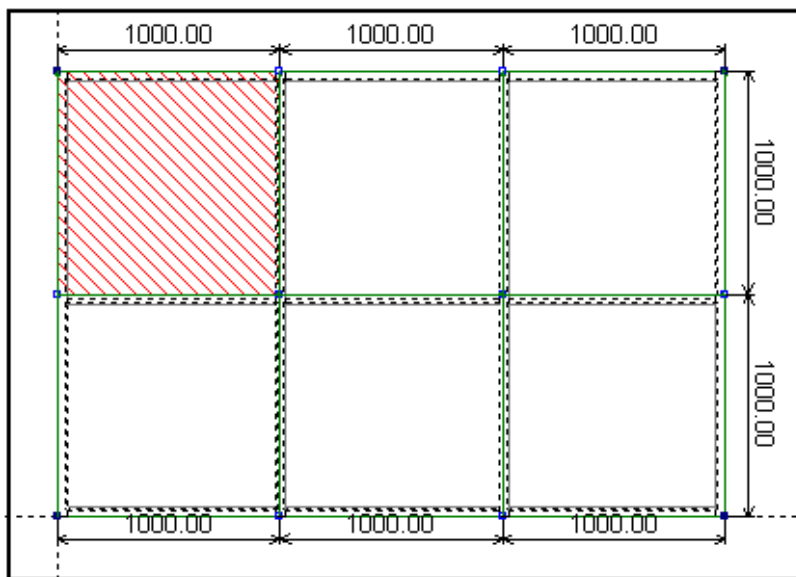
The frame colour changes to **RED**



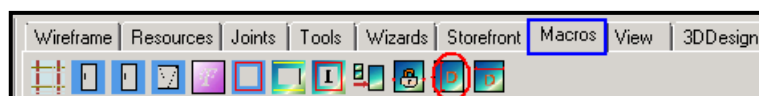
3.b From the MACROS tab, select the Lock Points icon to lock the transom together.



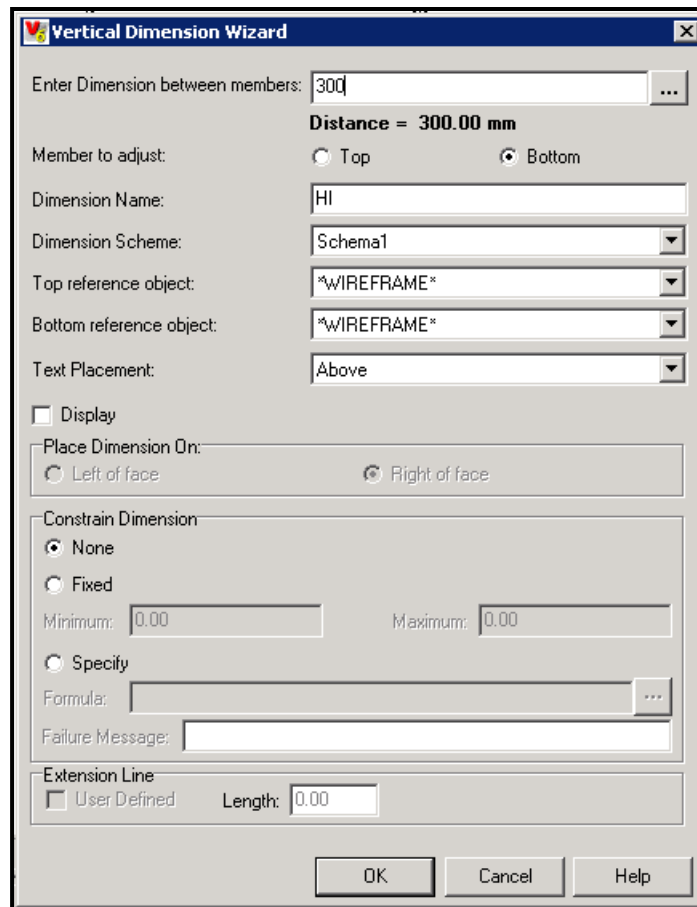
3.c Click on one of the high lights so that it becomes shaded in RED



3.b Select the MACROS tab, then the Vertical Dimension icon.

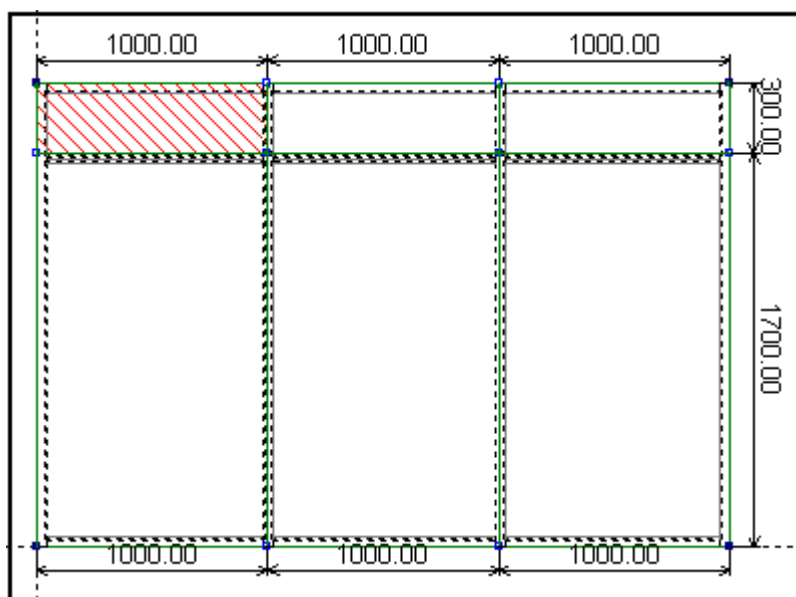


3.c Enter a Height dimension of 300mm and nominate the bottom member to move  
*Otherwise the top will move down and the frame will become smaller*



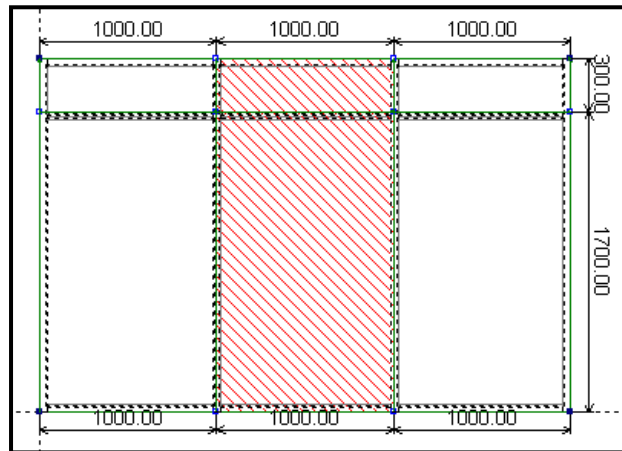
Click OK.

*Your High Lights have now changed to 300mm in height*

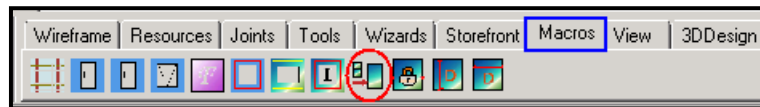


#### 4. MERGING TWO LIGHTS

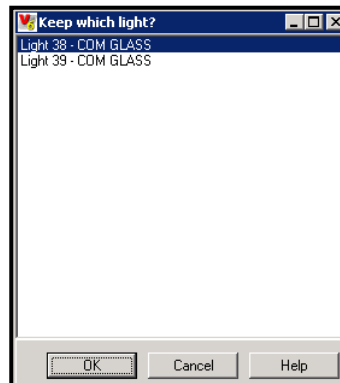
4.a While holding down the Shift Key, select the two lights to be merged



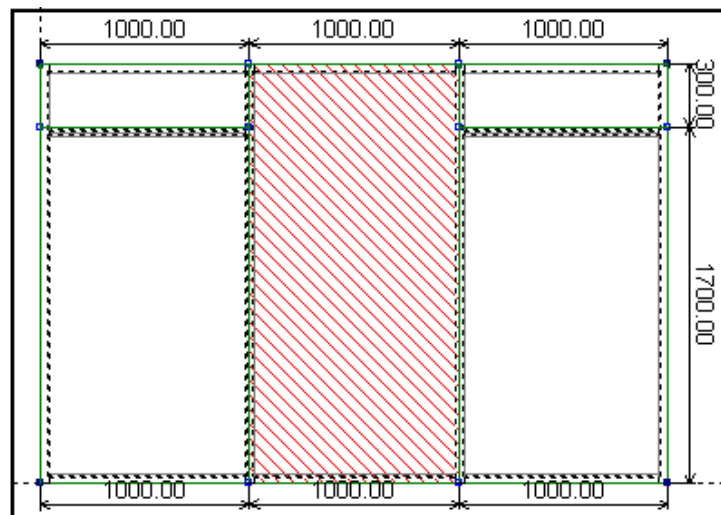
4.b Go to the MACRO Tab, and select the Merge Lights icon



4.c Select which light to keep and click OK

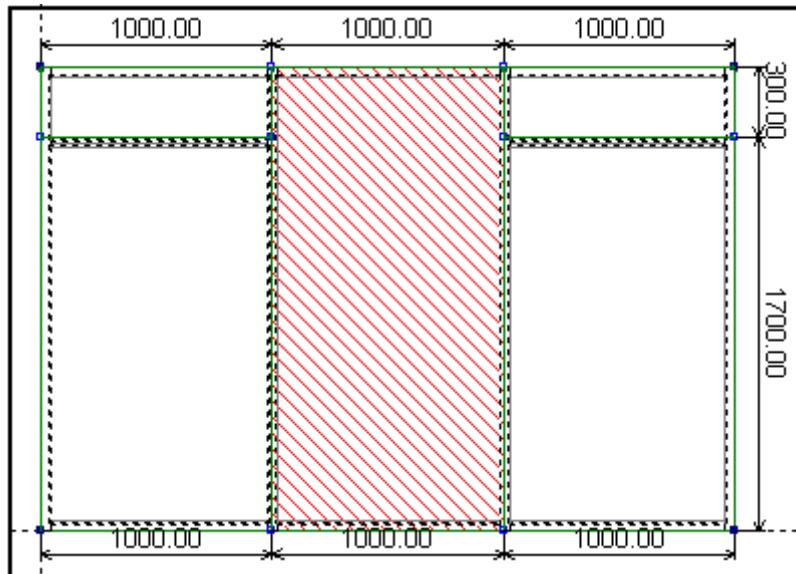


*THE TWO LIGHTS HAVE NOW BEEN MERGED*



## 5. CHANGING THE WIDTH OF A LITE FOR A DOOR OPENING

- 5.a Firstly, Left-click on the light that you wish to change the width of.  
**RED DIAGONAL STRIPES WILL APPEAR**



- 5.b From the WIZARDS tab, select the HORIZONTAL DIMENSION WIZARD

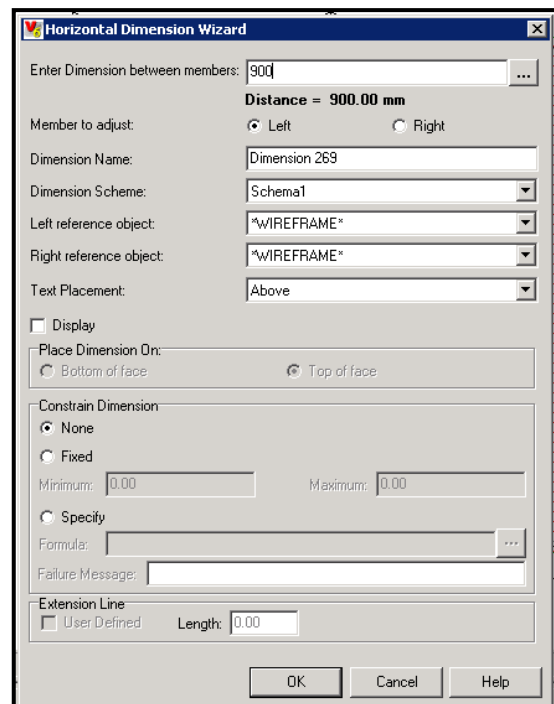
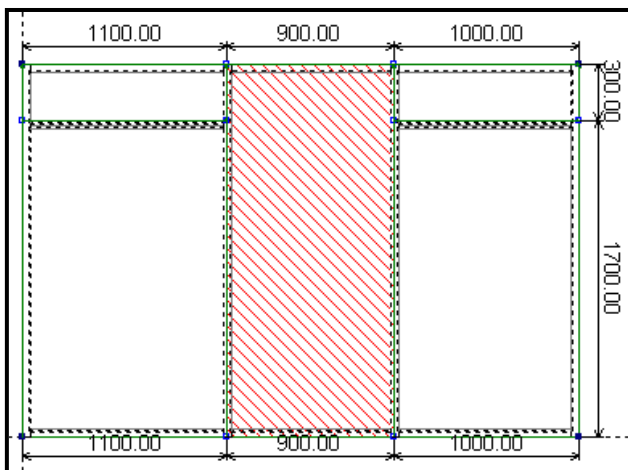


- 5.c Enter a door dimension of 900mm

- 5.d Nominate the member to move

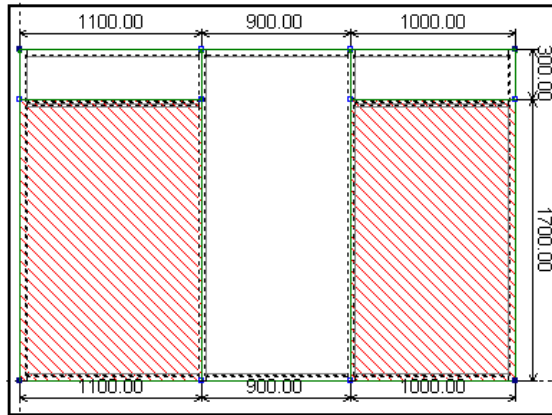
Click OK

*Your light has now changed to 900mm*

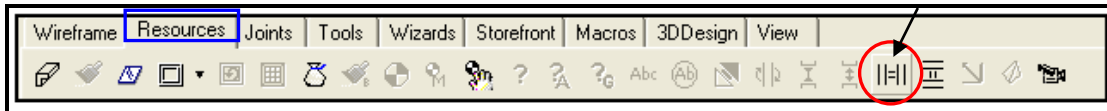


**6. MAKING THE REMAINING LIGHTS EQUAL SIZING (Based on Glass)**

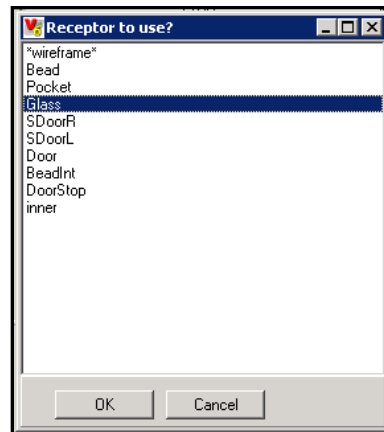
6.a Select all lights by holding down the SHIFT key and clicking on each light



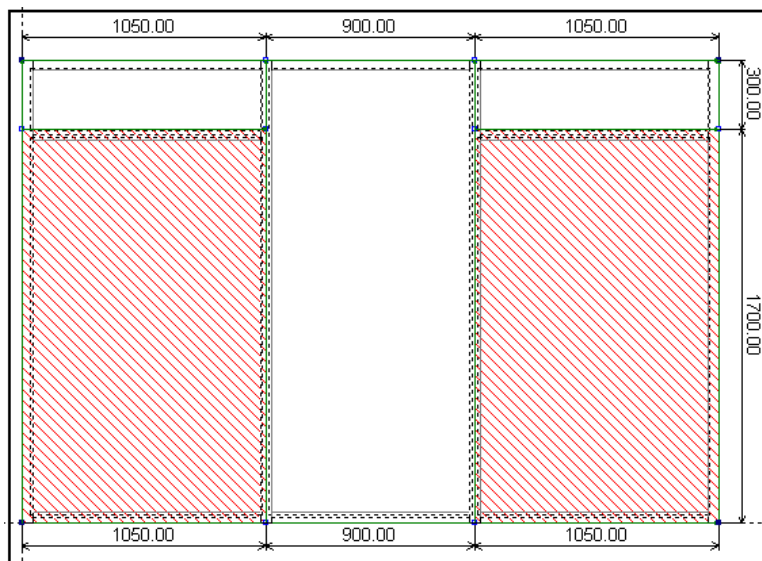
6.b From the RESOURCES tab, select the LIGHTS EQUAL ON WIDTH icon



6.c Select the Glass receptor  
Then click OK



6.d Your remaining lights are now equal

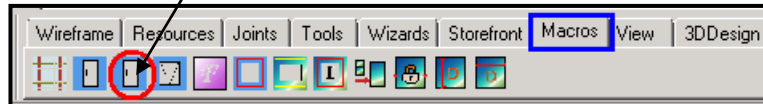


## 7. INSERTING THE DOOR

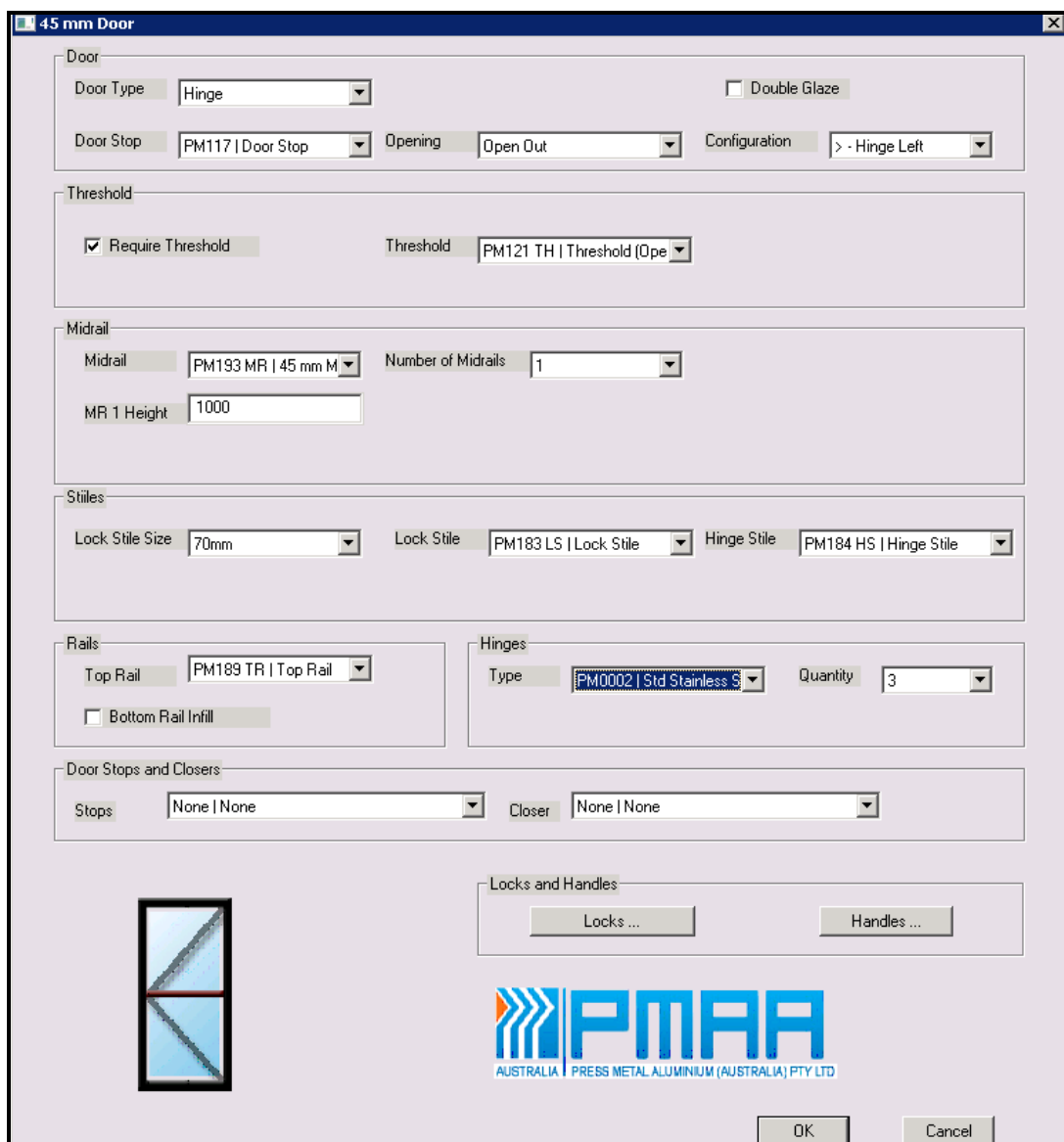
7.a Click on the Door light, then select the MACROS tab

7.b From the MACROS tab, select your door.

*In this example we will use the 45mm Hinged Door*



7.c Follow the Macro prompts & make the following selections



**45 mm Door**

Door  
 Door Type: Hinge  Double Glaze  
 Door Stop: PM117 | Door Stop Opening: Open Out Configuration: > - Hinge Left

Threshold  
 Require Threshold Threshold: PM121 TH | Threshold (Ope)

Midrail  
 Midrail: PM193 MR | 45 mm M Number of Midrails: 1  
 MR 1 Height: 1000

Stiles  
 Lock Stile Size: 70mm Lock Stile: PM183 LS | Lock Stile Hinge Stile: PM184 HS | Hinge Stile

Rails  
 Top Rail: PM189 TR | Top Rail  Bottom Rail Infill

Hinges  
 Type: PM0002 | Std Stainless S Quantity: 3

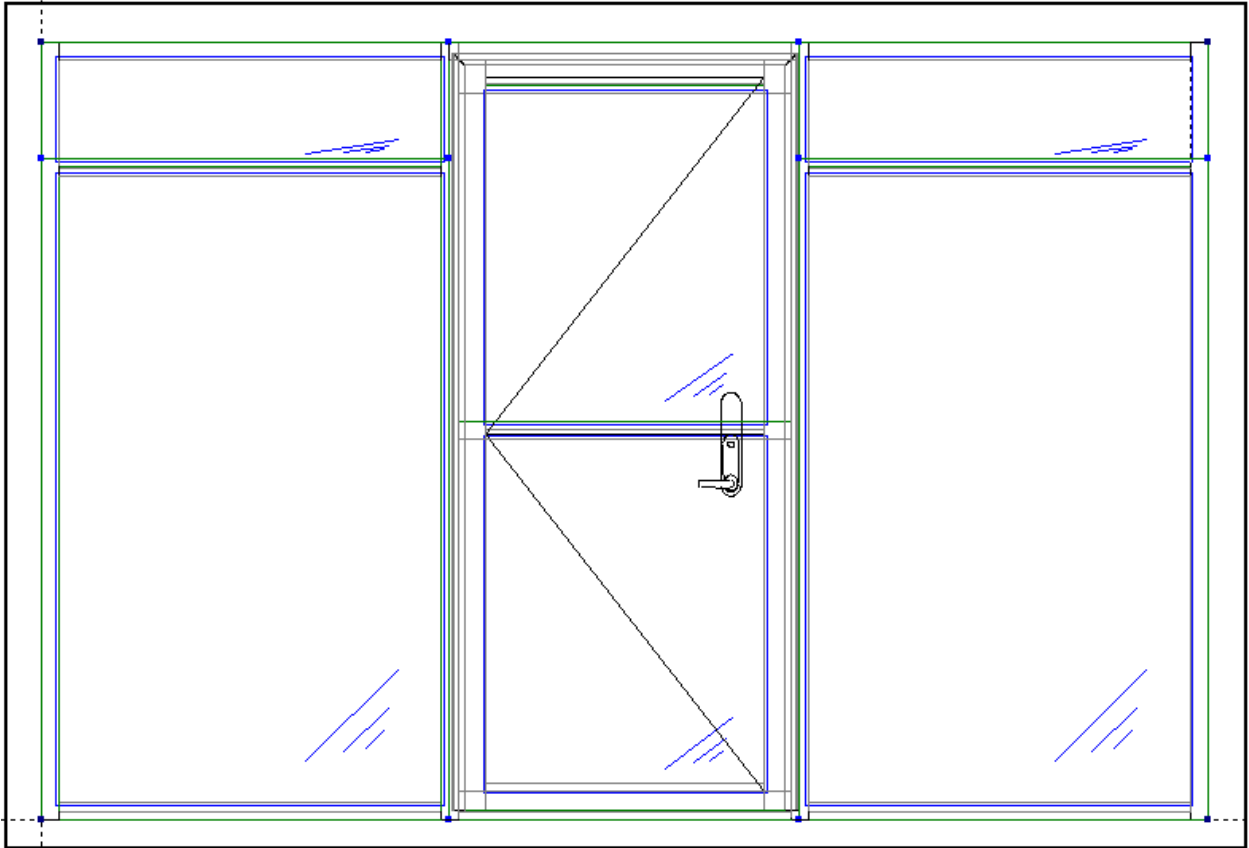
Door Stops and Closers  
 Stops: None | None Closer: None | None

Locks and Handles  
 Locks ... Handles ...

OK Cancel

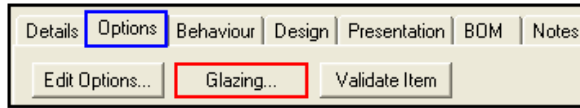
7.d Click OK once you have made your selections

*A Hinged Door has now been placed in the frame*

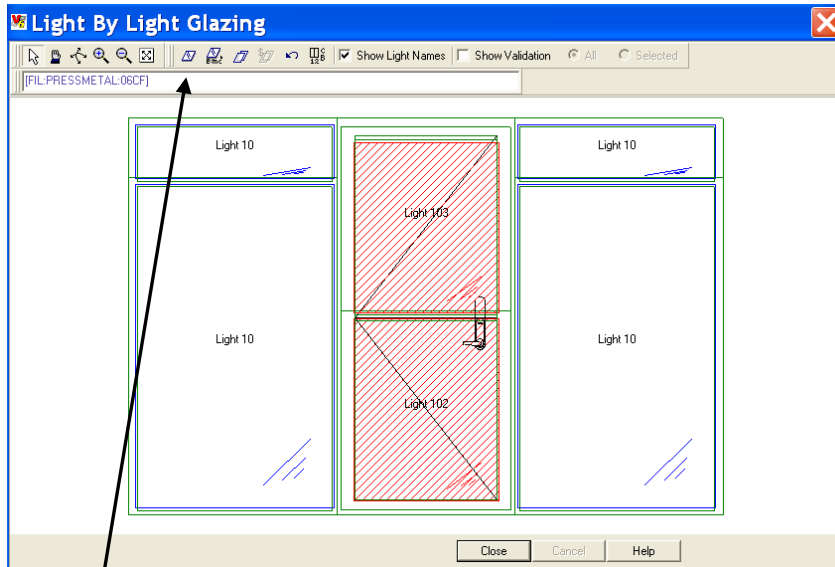


## 8. CHANGING THE GLASS WITHIN THE DOOR

8.a From the OPTIONS Tab, click the GLAZING button

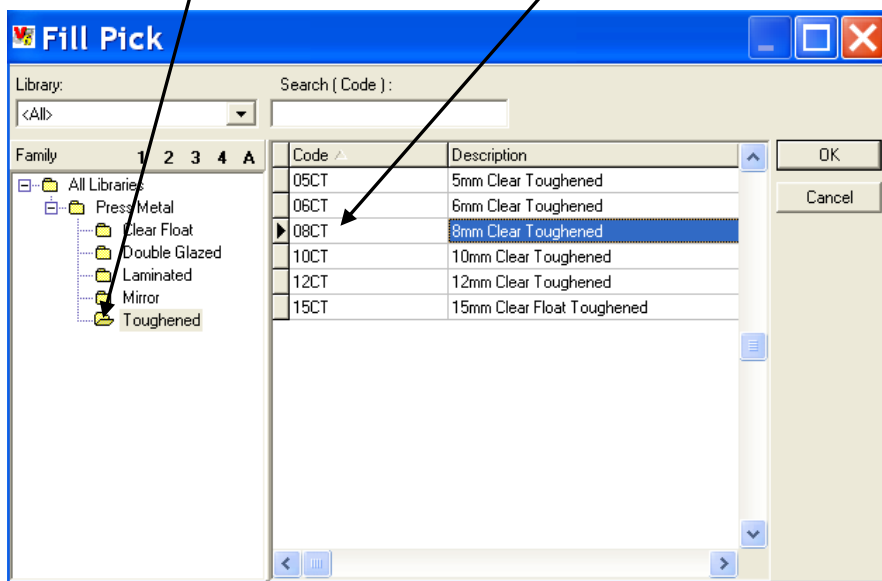


8.b Click on the top door light, then hold the SHIFT key down and click on the bottom light. Both lights should be filled with Red diagonal lines.

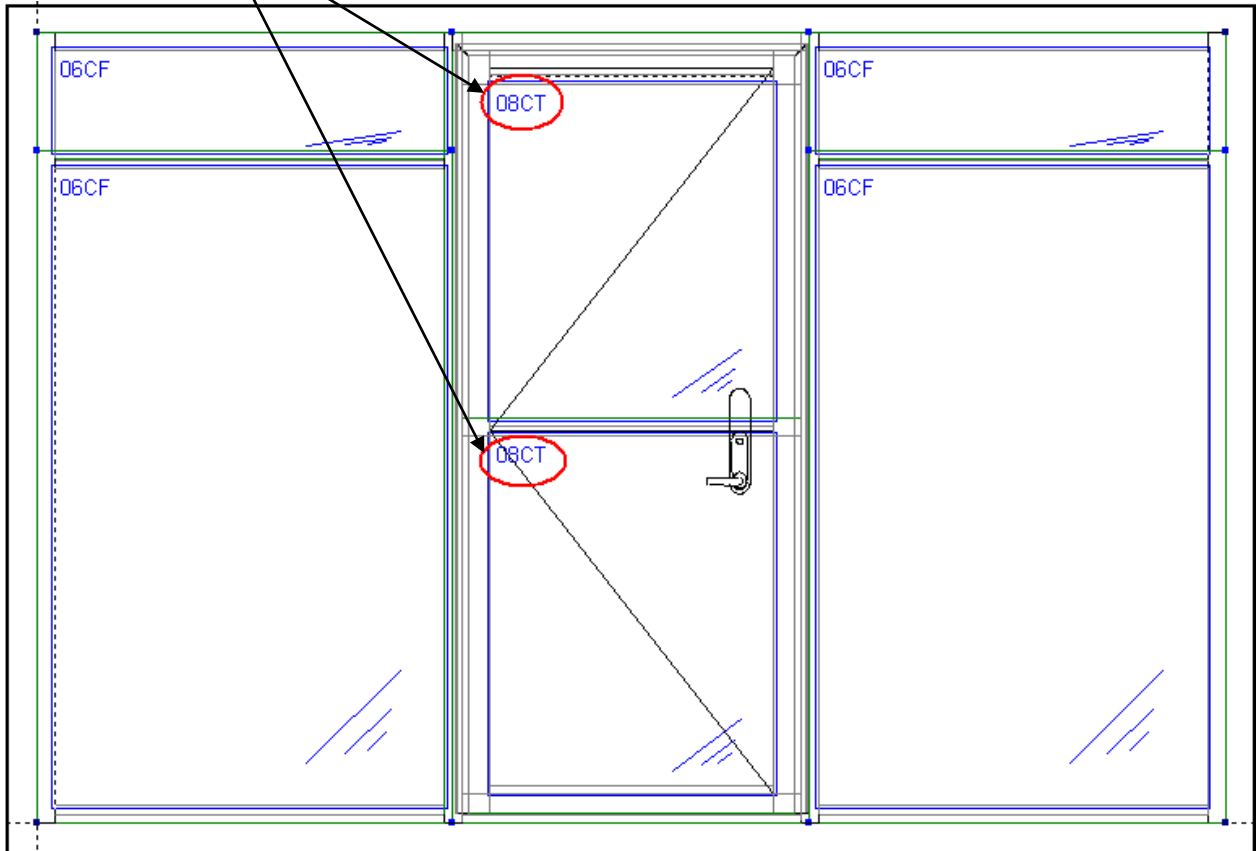


8.c Click on the FILL REPLACE button and your Glass List will appear from which you can now select the correct glass for the door.

8.d Select Toughened Glass on the left and then 08CT on the right. Click OK

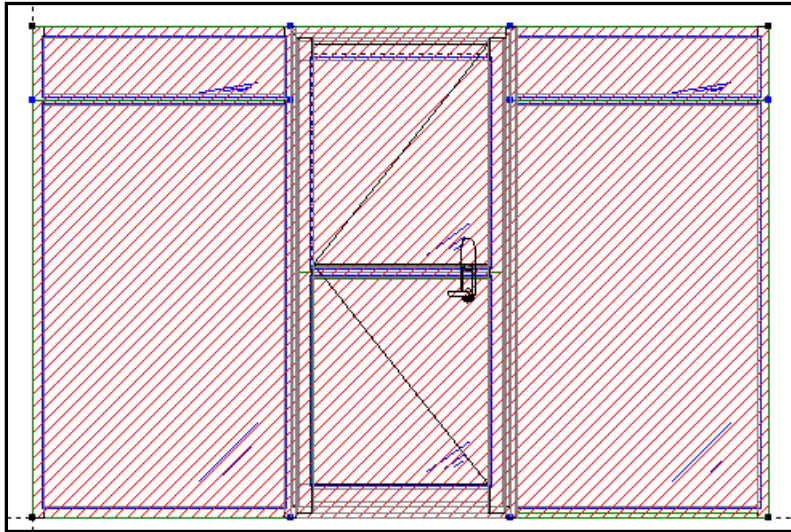


Note that the Glass codes in the door have now changed



## 9. SPLIT LIGHTS

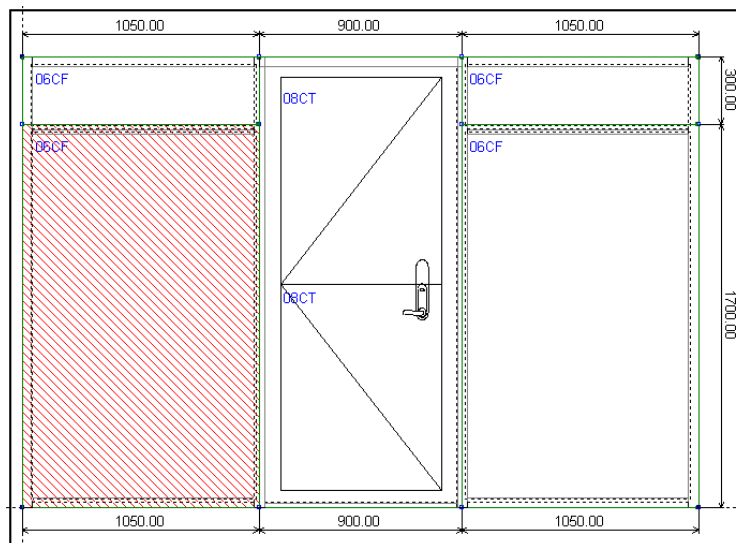
9.a Click on the frame so that it is highlighted **RED**



Then click on the Zoom Into button



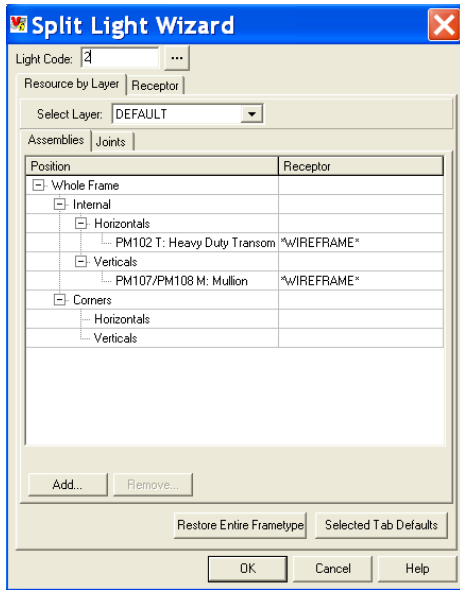
9.b Select the lights you wish to split so that they are highlighted **RED**



9.c Go to the WIZARDS tab & select the SPLIT LIGHT icon



9.d Type in the required light code & click OK



eg: Light code 1



eg: Light code 2



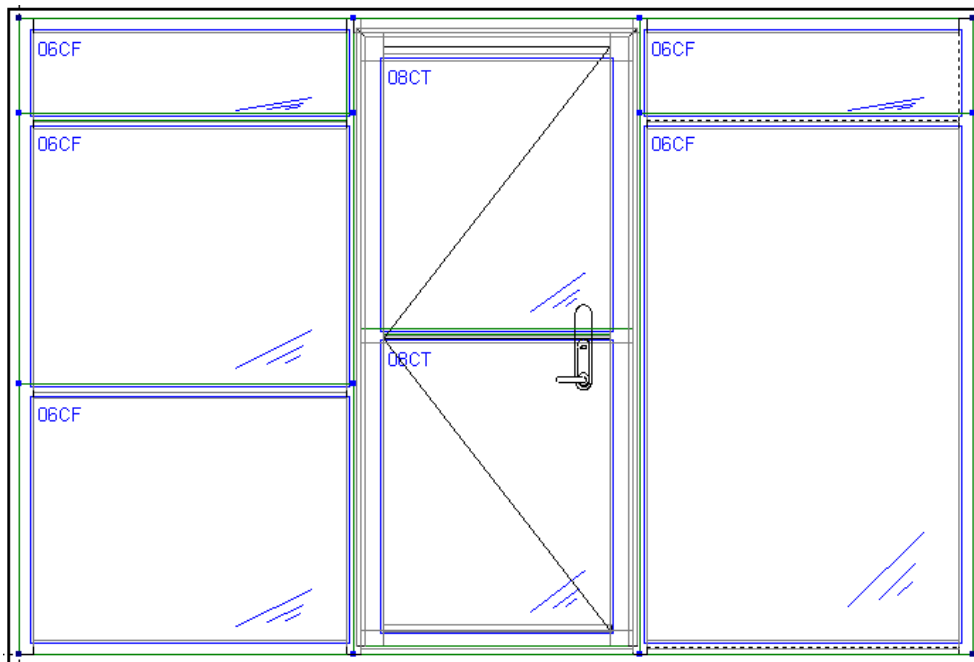
eg: Light code 11



eg: Light code 21



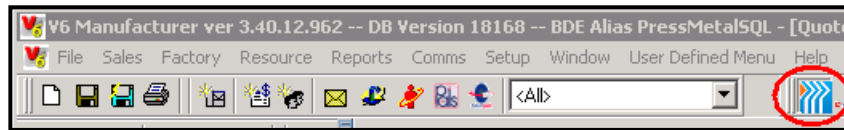
9.e Your light is now split



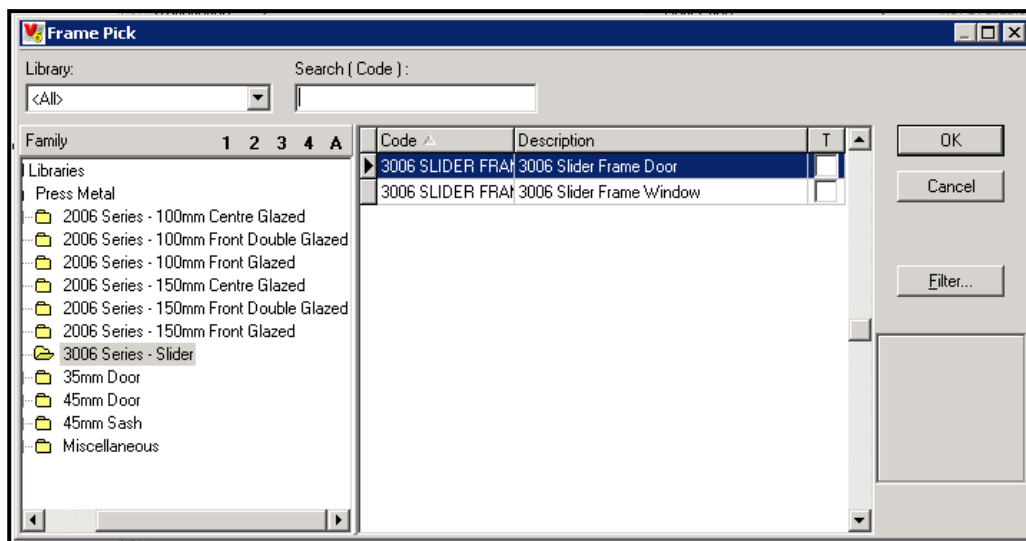
## 3006 Series – Slider Frame Suite

## 10. ADDING SLIDING DOORS

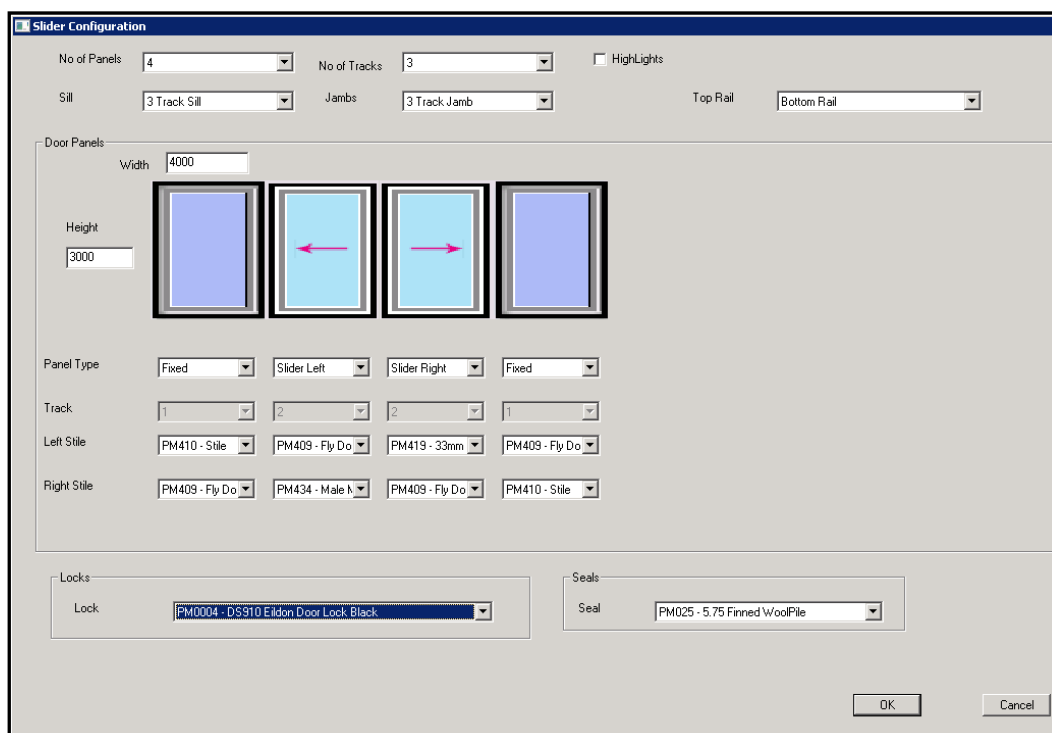
10.a Now, we'll add another frame, this time a sliding door. Begin by clicking on the PMAA Icon



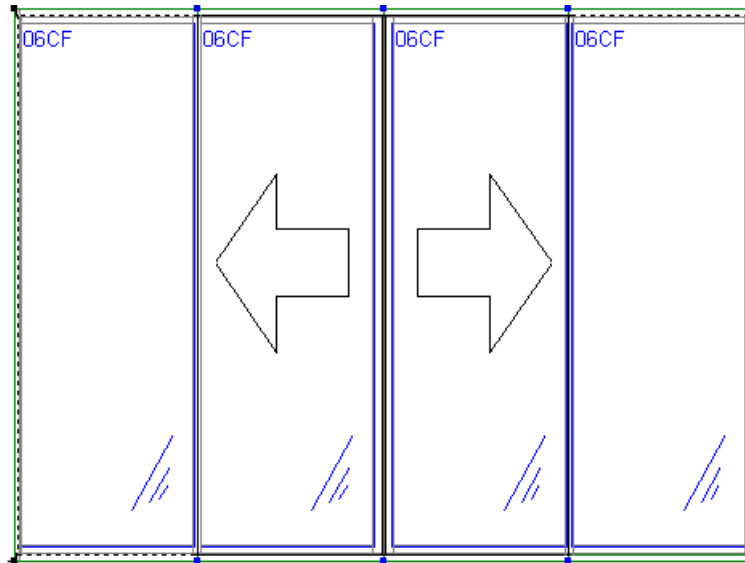
10.b Firstly, select from the left side of the picker the 3006 Series Slider, and then secondly, the 3006 Slider Frame Door from the right side.



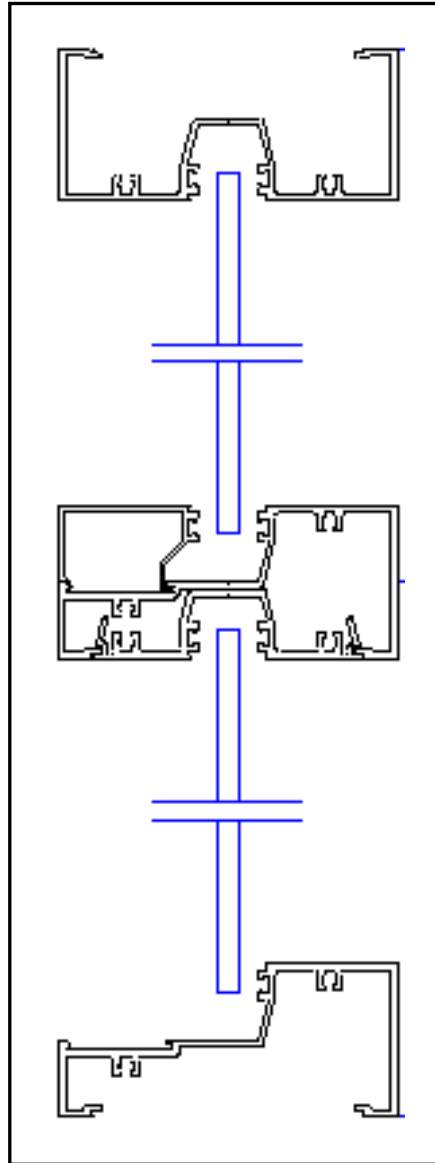
10.c Make the following selections, then click OK.



*A Sliding Door has now been placed in the frame.*

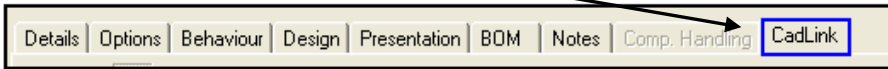


# CadLink



# 1. CADLINK

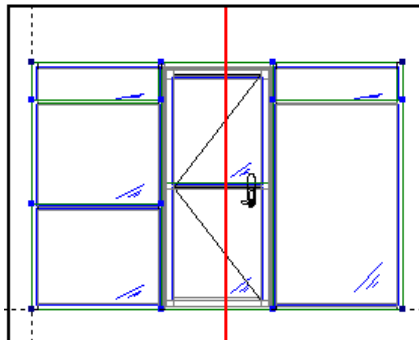
1.a Select the CadLink tab



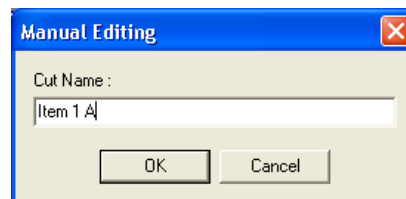
1.b Select EDIT CUT on the Left-hand side of the screen



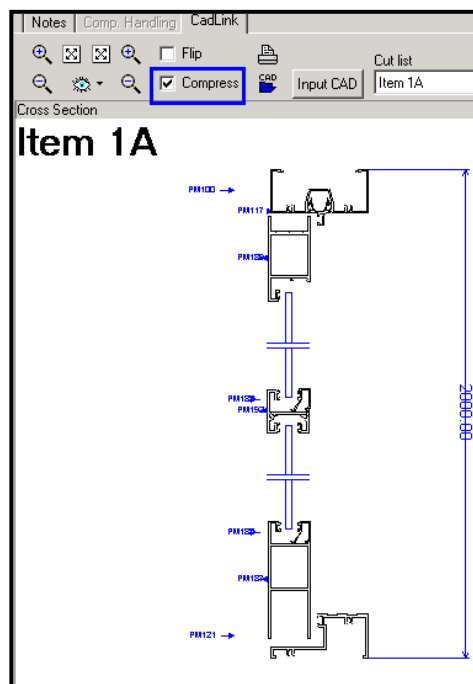
1.c Hold down the left mouse button and drag mouse through the section you wish to view



1.d Enter a name for the cut and then click OK



1.e Selecting COMPRESS will give you a better view of the section

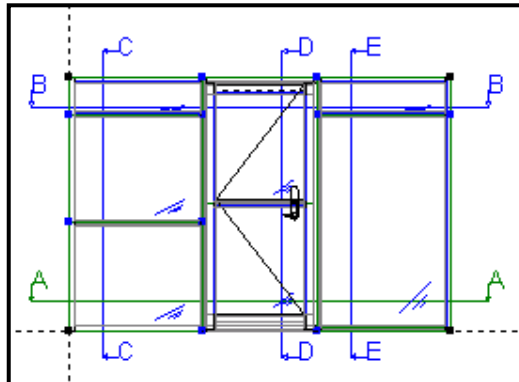


*Alternatively, CadLink can automatically generate a cut for each unique placement of extrusion...*

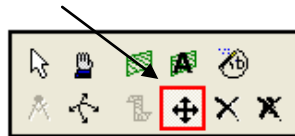
1.f Select the AUTOMATICALLY GENERATE CUTS icon



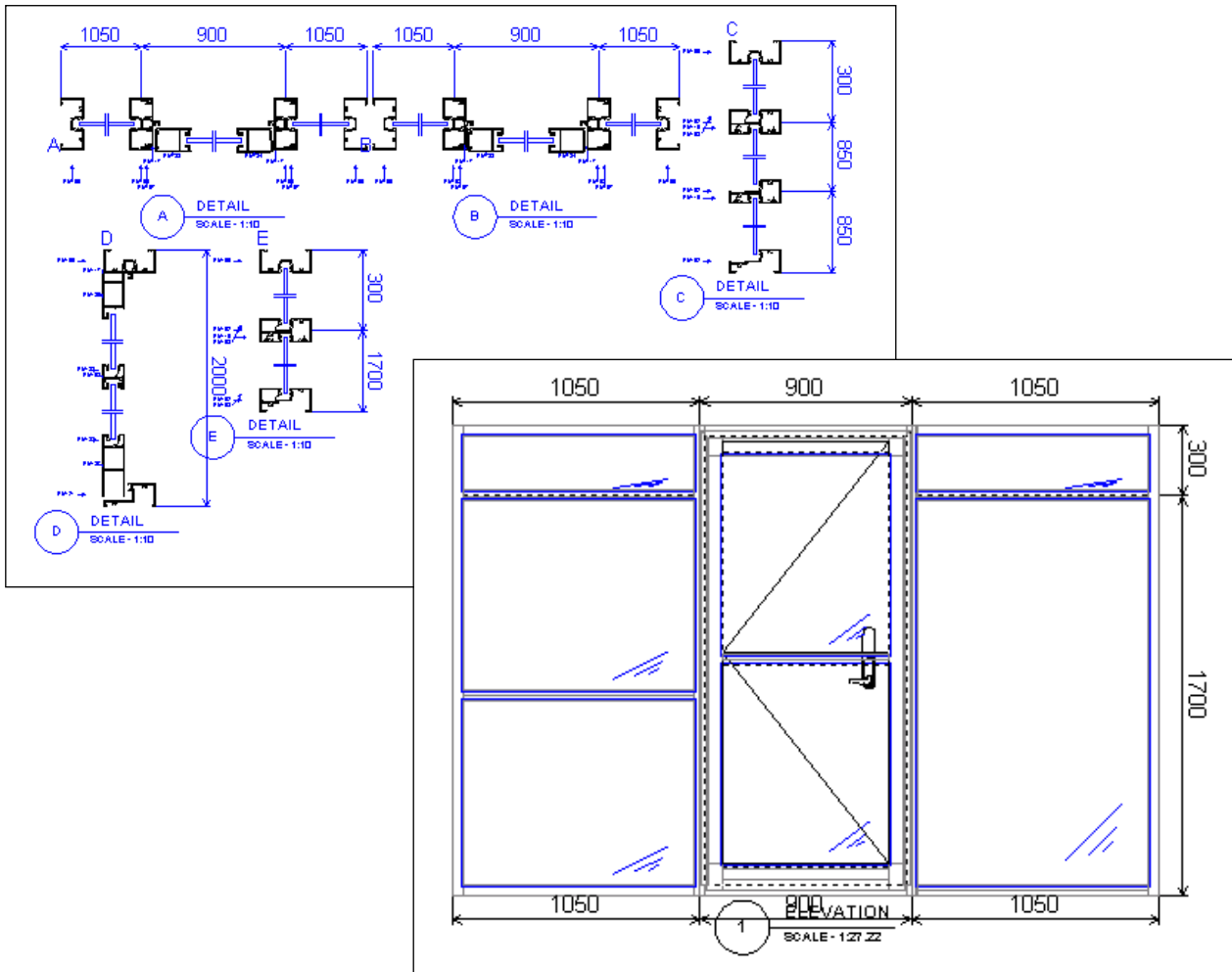
Cuts are placed...



1.g Click on the SELECT OR MODIFY CUT icon, then the cut that you wish to view

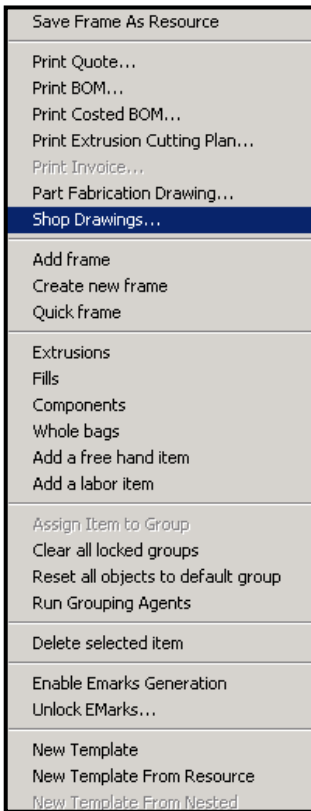


# Shop Drawings

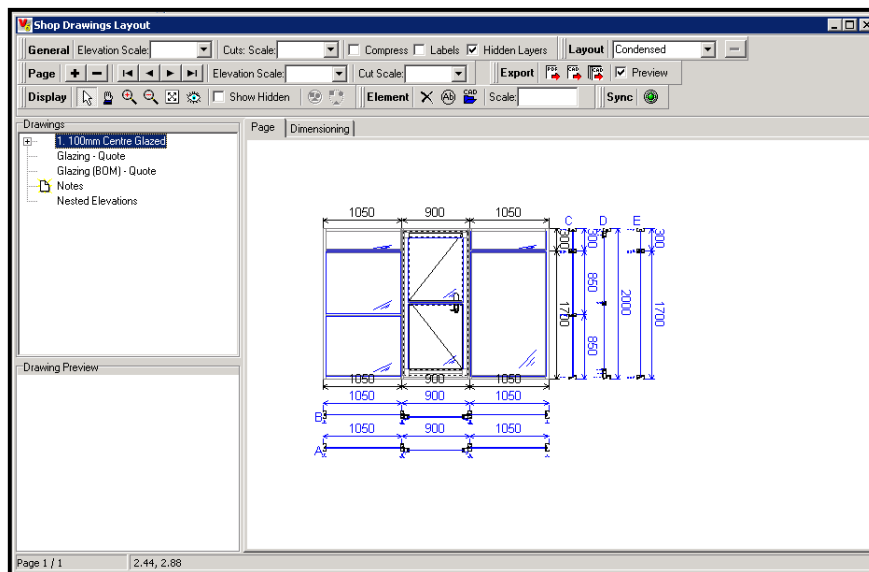
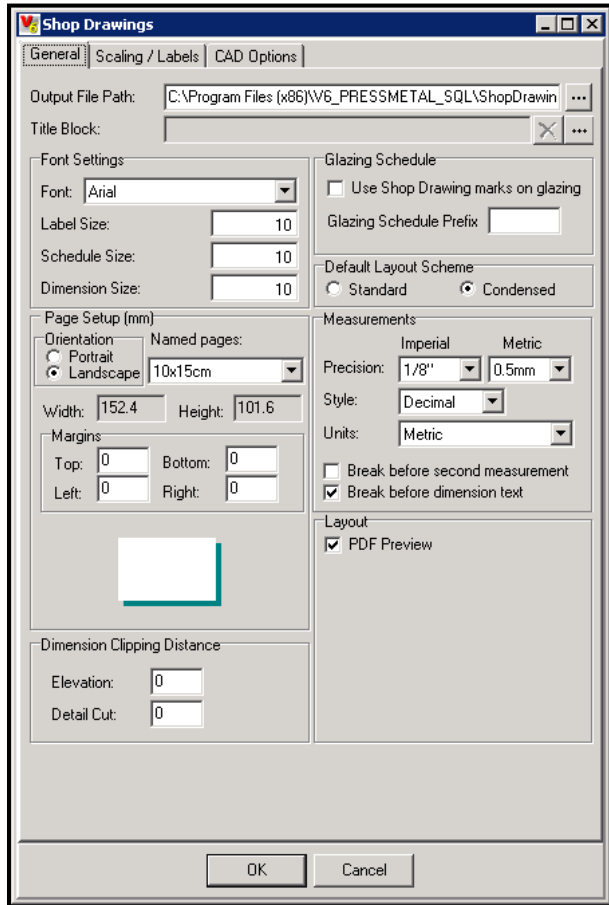


# 1. SHOP DRAWINGS

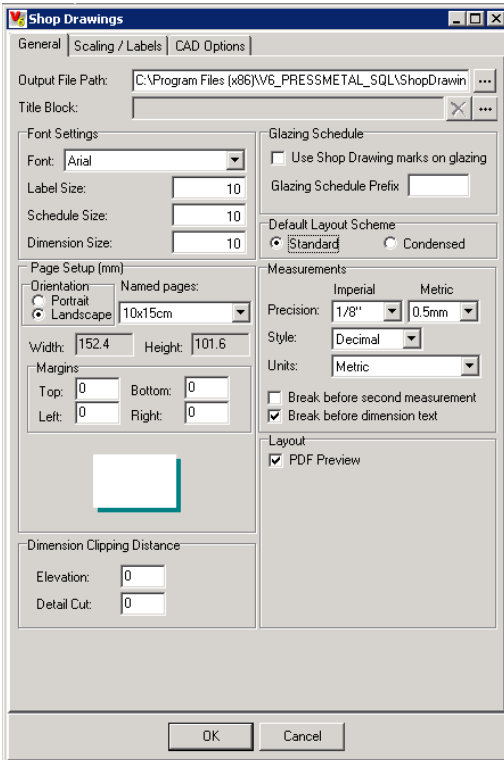
1.a Right mouse click and select SHOP DRAWINGS



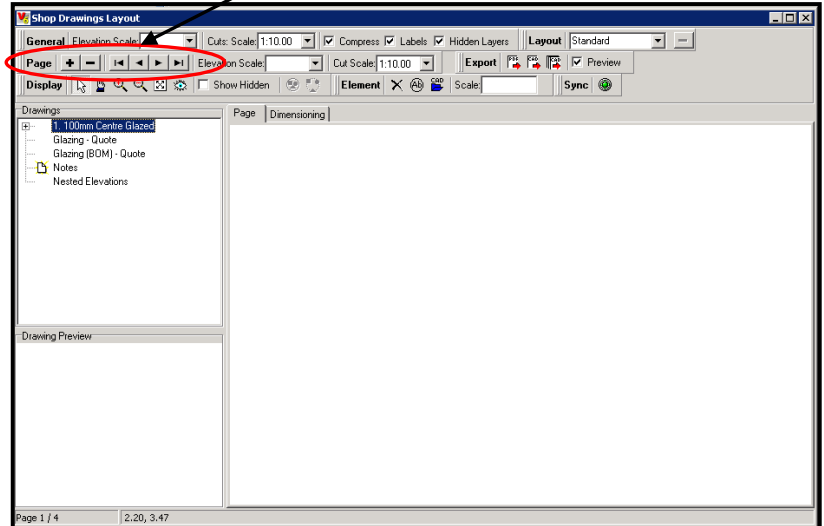
1.b Click OK on the settings box



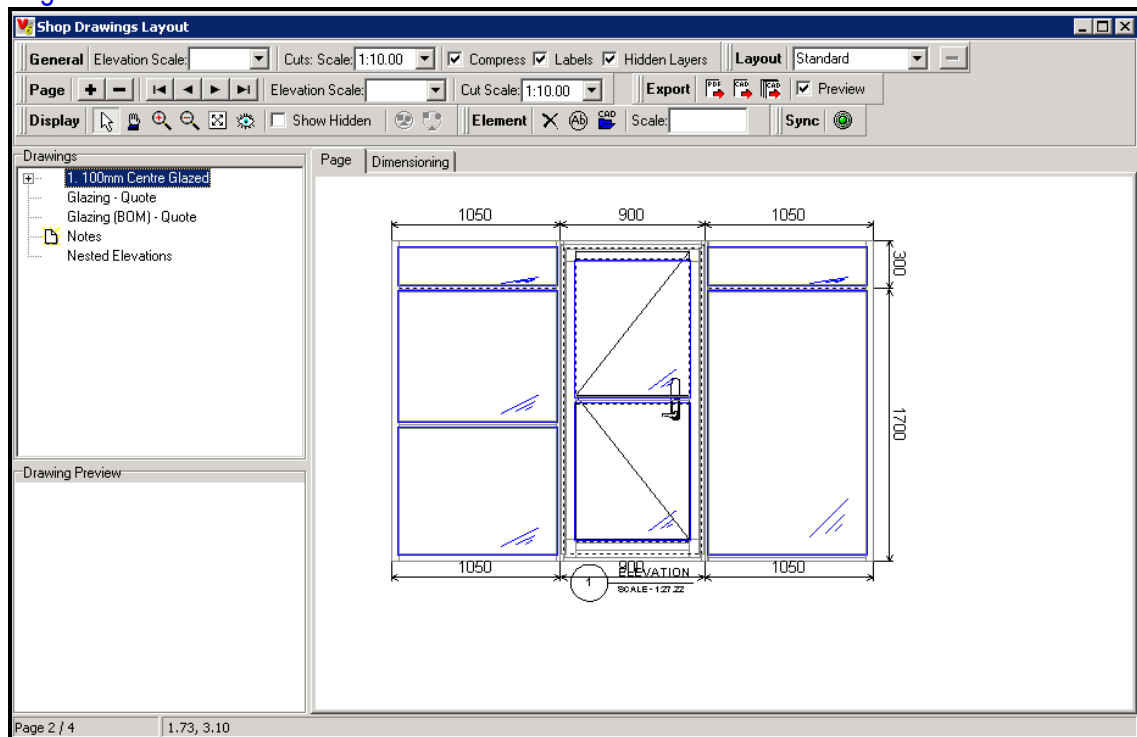
This time let's choose the Standard Default Layout Scheme



1.c Click and drag each item from the tree onto the page, then use your mouse to adjust the size. Use the arrow keys to navigate to the previous/next page, and the +/- keys to add or delete a page.



Page 2



Page 3

The screenshot shows the 'Shop Drawings Layout' software interface. The main drawing area displays a technical drawing of a window frame with various dimensions and callouts. The dimensions include 1050, 900, 1050, 1050, 900, 1050, 300, 850, 850, 300, 1700, and 2000. Callouts A, B, C, D, and E are labeled 'DETAIL SCALE: 1:10'. The software interface includes a 'General' tab with 'Elevation Scale' and 'Cuts: Scale: 1:10.00' settings, and a 'Page' tab with 'Elevation Scale' and 'Cut Scale: 1:10.00' settings. The 'Drawings' list on the left includes '1. 100mm Centre Glazed', 'Glazing - Quote', 'Glazing (BOM) - Quote', 'Notes', and 'Nested Elevations'. The status bar at the bottom indicates 'Page 3 / 4' and '2.26, 0.22'.

Page 4

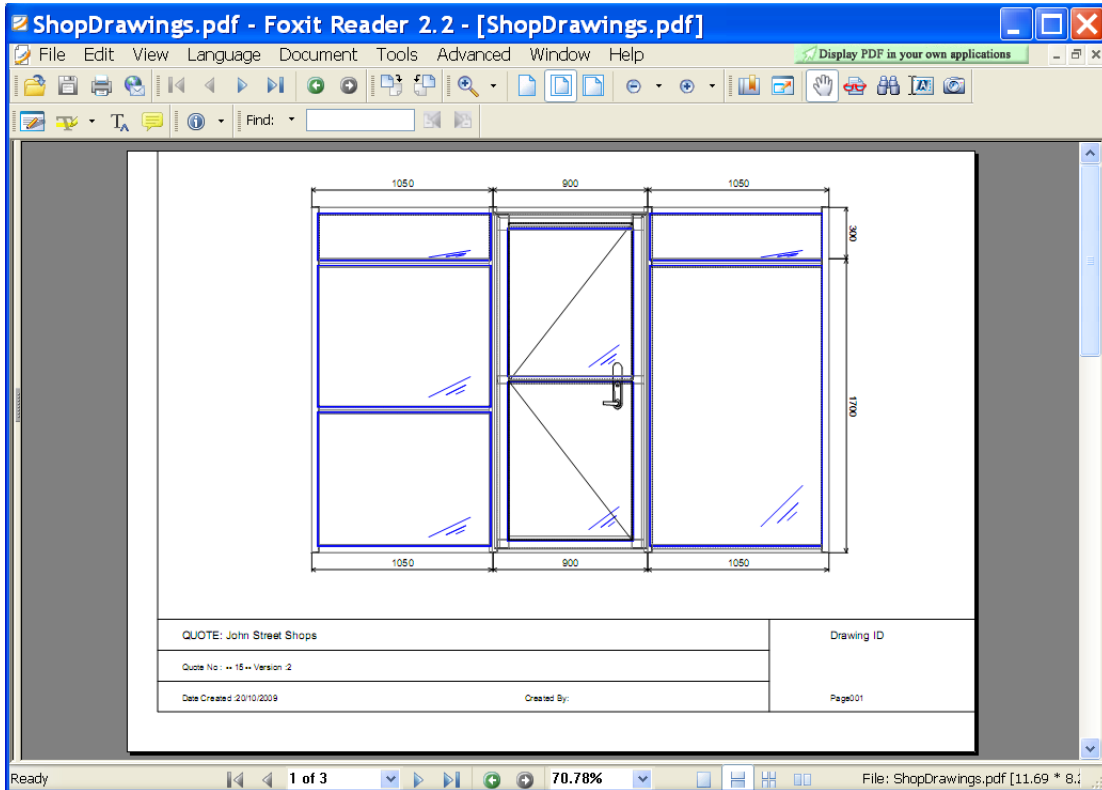
The screenshot shows the 'Shop Drawings Layout' software interface. The main drawing area displays a table titled 'Glazing - Quote'. The table has three columns: 'Code', 'Description', and 'Glazing Mark'. The software interface is identical to the previous screenshot, showing the same 'General' and 'Page' tabs and 'Drawings' list. The status bar at the bottom indicates 'Page 4 / 4' and '1.04, 2.86'.

Glazing - Quote		
Code	Description	Glazing Mark
06CF	6mm Clear Float	
08CT	8mm Clear Toughened	

1.d You can turn your shop drawings into a PDF file for easier printing or emailing by selecting PREVIEW, then PDF



1.e You can now Save, Print or Email your file



ShopDrawings.pdf - Foxit Reader 2.2 - [ShopDrawings.pdf]

File Edit View Language Document Tools Advanced Window Help

Display PDF in your own applications

QUOTE: John Street Shops

Quote No: -- 15 -- Version :2

Date Created: 20/10/2009

Created By:

Drawing ID

Page002

Ready 2 of 3 70.78% File: ShopDrawings.pdf [11.69 \* 8.1

ShopDrawings.pdf - Foxit Reader 2.2 - [ShopDrawings.pdf]

File Edit View Language Document Tools Advanced Window Help

Display PDF in your own applications

Glazing - 100mm Centre Glazed		
Code	Description	Int EMark
08CT	8mm Clear Toughened	
06CF	6mm Clear Float	

Cut List - 100mm Centre Glazed				
Quantity	Extrusion	Description	Length	Int EMark
1	PM408	Bottom Rail	854.5 mm	
1	PM193	45mm x 45mm Midrail	854.5 mm	
1	PM189	45mm x 87mm Top Rail	716.5 mm	
3	PM188	45mm Rail Bead	716.5 mm	
1	PM184	45mm x 70mm Hinge Stile	1,930 mm	
1	PM183	45mm x 70mm Lock Stile	1,930 mm	
1	PM120	Open In Threshold	855 mm	
1	PM117	45mm Door Stop	1,944 mm	
1	PM117	45mm Door Stop	1,944 mm	
1	PM117	45mm Door Stop	882.5 mm	
1	PM116	Pocket Filler	1,946 mm	
1	PM116	Pocket Filler	1,946 mm	
1	PM116	Pocket Filler	886 mm	
2	PM110	Glazing Adaptor	2,000 mm	
2	PM110	Glazing Adaptor	984 mm	
1	PM110	Glazing Adaptor	980.5 mm	
1	PM103	Square Bead	984 mm	
2	PM103	Square Bead	981 mm	
3	PM102	Heavy Duty Sill	984 mm	
2	PM102	Heavy Duty Sill	980.5 mm	
4	PM100	Heavy Duty Main Frame	2,000 mm	
1	PM100	Heavy Duty Main Frame	984 mm	
1	PM100	Heavy Duty Main Frame	980.5 mm	
1	PM100	Heavy Duty Main Frame	900 mm	

QUOTE: John Street Shops

Quote No: -- 15 -- Version :2

Date Created: 20/10/2009

Created By:

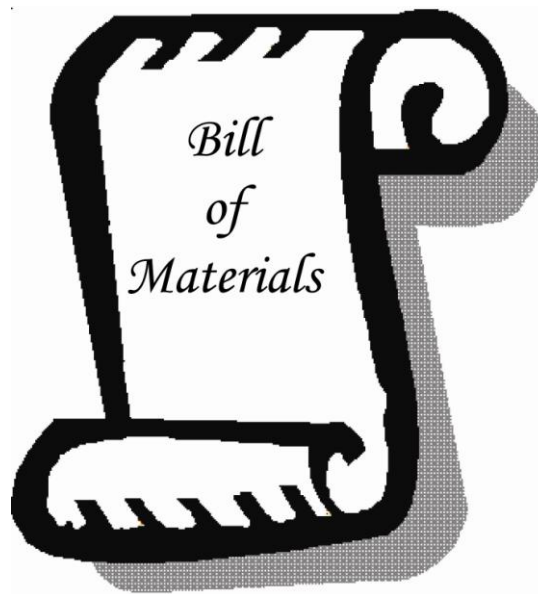
Drawing ID

Page003

Ready 3 of 3 70.78% File: ShopDrawings.pdf [11.69 \* 8.1

When you're happy with your layout, click Yes to save.

# BOM



# 1. VIEWING THE BILL OF MATERIALS

## 1.a Select the BOM tab



Each of the lower tabs will show you the materials, quantities and sizes required for each type  
 - eg: Glass

Source	Quantity	EMark	Fill	Description	Width	Height	Part Code
F	1		08CT	8mm Clear Toughened	726.0	858.5	08CT
F	1		08CT	8mm Clear Toughened	726.0	853.5	08CT
F	1		06CF	6mm Clear Float	998.5	1648.5	06CF
F	1		06CF	6mm Clear Float	998.5	821.0	06CF
F	1		06CF	6mm Clear Float	998.5	798.5	06CF
F	2		06CF	6mm Clear Float	998.5	248.5	06CF

You CANNOT see the BOM for full bars at this level because it is generated from ALL frames on the quote.

It can be accessed from the BOM tab on the quote tree.

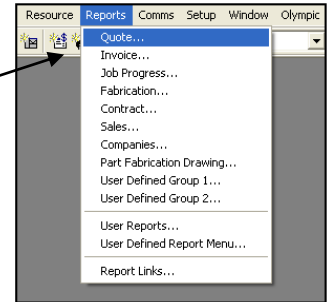
I/a	Source	Quantity	EMark	Extrusion	Finish Color	Length	Cut1	Cut2	Tag	Chamfer Begin	Chamfer End	Part Code	Bends
No	F	1		PM434	MILL (MILL)	2932.0	0.0T	0.0T	A			PM434	
No	F	1		PM419	MILL (MILL)	2932.0	0.0T	0.0T	A			PM419	
No	F	1		PM416	MILL (MILL)	3940.0	0.0T	0.0T	A			PM416	
No	F	1		PM416	MILL (MILL)	1972.0	0.0T	0.0T	A			PM416	
No	F	2		PM412	MILL (MILL)	3000.0	0.0T	0.0T	A			PM412	
No	F	2		PM410	MILL (MILL)	2932.0	0.0T	0.0T	A			PM410	
No	F	4		PM409	MILL (MILL)	2932.0	0.0T	0.0T	A			PM409	
No	F	1		PM408	MILL (MILL)	932.0	0.0	0.0	A			PM408	
No	F	7		PM408	MILL (MILL)	932.0	0.0T	0.0T	A			PM408	
No	F	1		PM406	MILL (MILL)	3974.0	0.0T	0.0T	A			PM406	
No	F	4		PM405	MILL (MILL)	2905.0	0.0T	0.0T	A			PM405	
No	F	1		PM401	MILL (MILL)	3974.0	0.0T	0.0T	A			PM401	
No	F	1		PM193	MILL (MILL)	710.0	0.0	0.0	A			PM193	
No	F	1		PM189	MILL (MILL)	710.0	0.0	0.0	A			PM189	
No	F	2		PM188	MILL (MILL)	710.0	0.0T	0.0T	A			PM188	
No	F	1		PM187	MILL (MILL)	710.0	0.0T	0.0T	A			PM187	
No	F	1		PM184	MILL (MILL)	1932.0	0.0T	0.0T	A			PM184	
No	F	1		PM183	MILL (MILL)	1932.0	0.0T	0.0T	A			PM183	
No	F	1		PM121	MILL (MILL)	855.0	0.0T	0.0T	A			PM121	
No	F	1		PM117	MILL (MILL)	1926.0	0.0T	45.0T	A			PM117	
No	F	1		PM117	MILL (MILL)	1926.0	45.0T	0.0T	A			PM117	
No	F	1		PM117	MILL (MILL)	887.0	45.0T	45.0T	A			PM117	
No	F	3		PM110	MILL (MILL)	982.5	0.0T	0.0T	A			PM110	
No	F	2		PM108	MILL (MILL)	2000.0	0.0T	0.0T	A			PM108	
No	F	2		PM107	MILL (MILL)	2000.0	0.0T	0.0T	A			PM107	
No	F	3		PM103	MILL (MILL)	982.5	0.0T	0.0T	A			PM103	
No	F	5		PM102	MILL (MILL)	982.5	0.0T	0.0T	A			PM102	
No	F	2		PM100	MILL (MILL)	2000.0	0.0T	0.0T	A			PM100	
No	F	2		PM100	MILL (MILL)	982.5	0.0T	0.0T	A			PM100	
No	F	1		PM100	MILL (MILL)	855.0	0.0T	0.0T	A			PM100	

# Printing a Quote

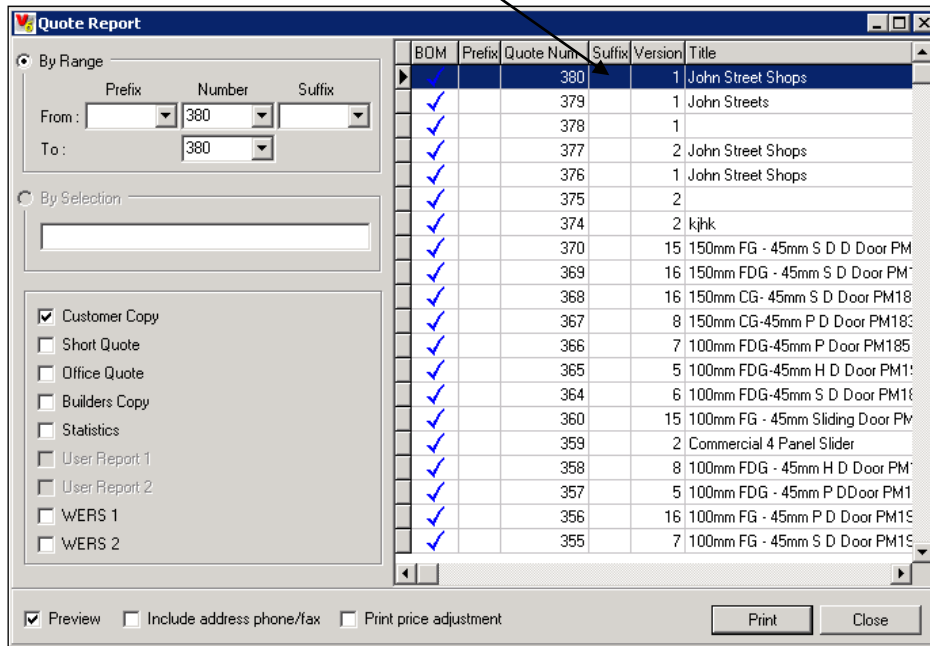


## 1. PRINTING A QUOTE

1.a Go to the REPORTS drop-down menu and select QUOTE



1.b Select the quote you wish to print



1.c Then click on the PRINT button in the bottom right-hand corner of the screen  
This will show a preview of your quote on the screen

1.d If you wish to proceed with printing click the PRINTER icon at the top of the screen

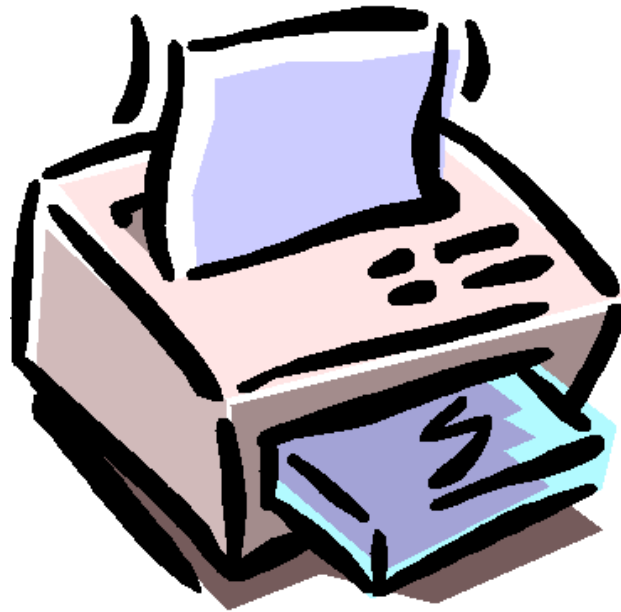


Note you also have the option to save the file as a PDF or email it.

1.e Or if you wish to exit without printing, click the CLOSE icon

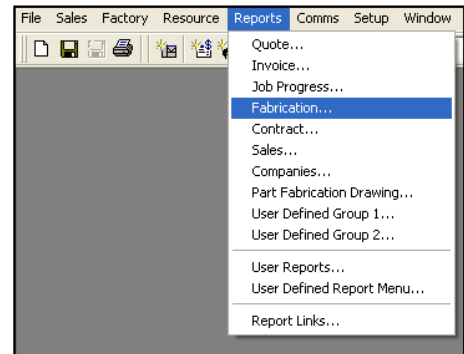


# Printing the Fabrication Report

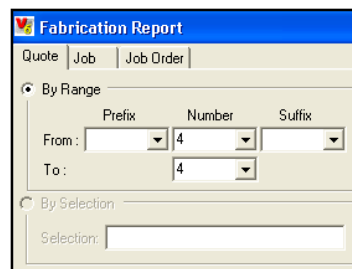


## 1. PRINTING THE FABRICATION REPORT

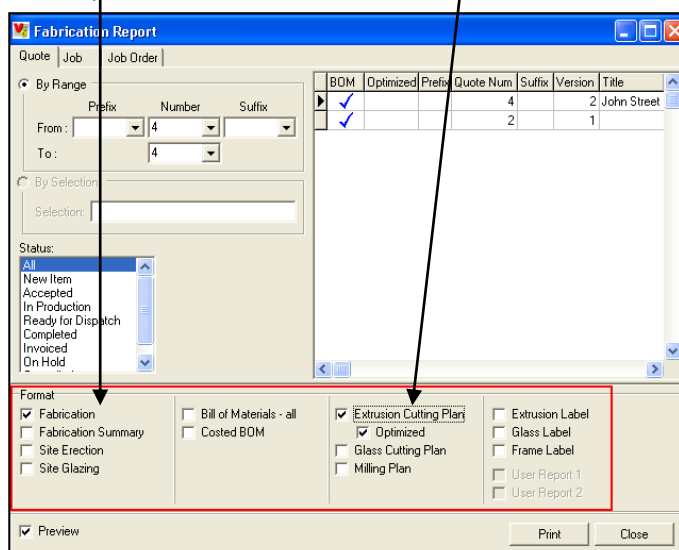
1.a From the REPORTS drop-down menu, select FABRICATION



1.b Ensure you have selected the quote number/s that you wish to run the report for

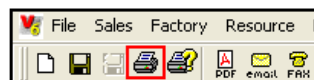


1.c In the FORMAT box, tick the reports you wish to run. In this example we will be running a FABRICATION report and an EXTRUSION CUTTING PLAN

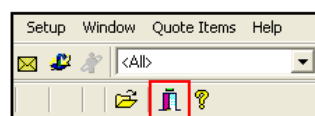


1.d Click on the PRINT button in the bottom right-hand corner of the screen  
This will show a preview of the report on your screen

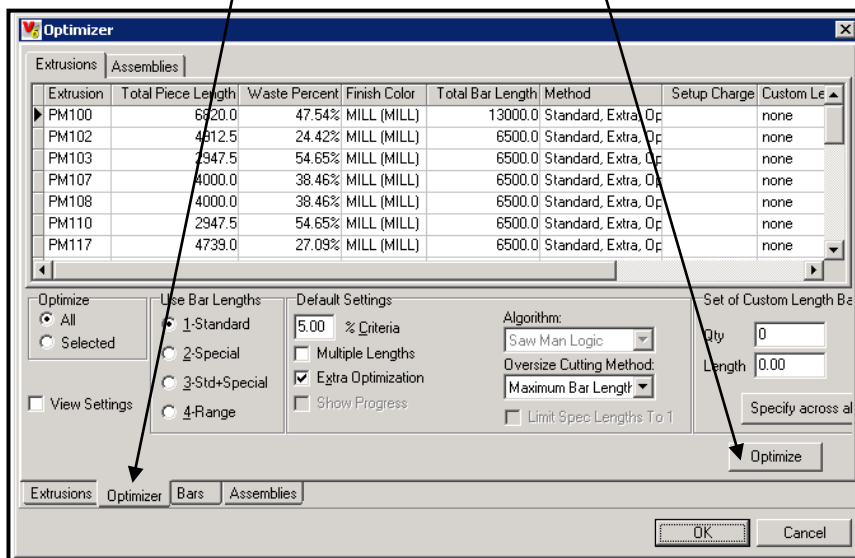
1.e If you wish to proceed with printing, click the PRINTER icon at the top of the screen



1.f To exit, click on the CLOSE icon on the toolbar



1.g Select the OPTIMISER tab and then the OPTIMISE button



1.h Then click OK

This will show a preview of the Extrusion Cutting plan on your screen

1.i If you wish to print, click on the PRINTER icon



1.j Click on the CLOSE icon to exit

