

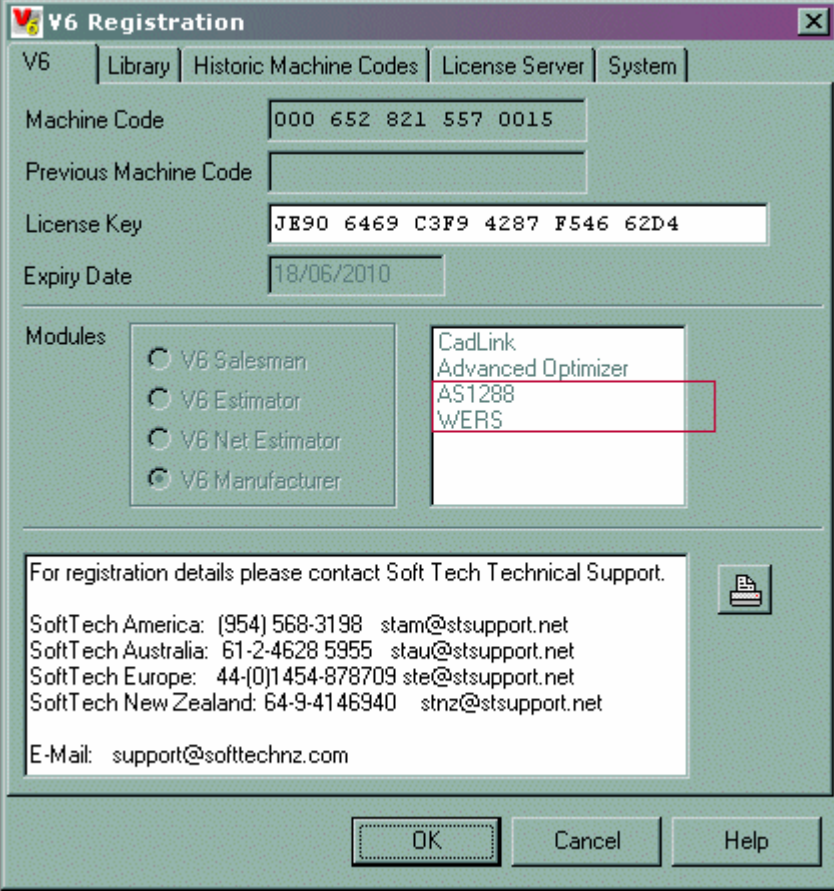
Windows Energy Rating Scheme (WERS) Usage with V6

(2009)



WERS Introduction/Overview within V6

The WERS module allows for AWA certified WERS data to be imported into V6 and to be associated with V6 fills and frame types. It also allows for reporting of the WERS data for quotes. This document provides an overview of what is involved to setup, import and use WERS data within V6.

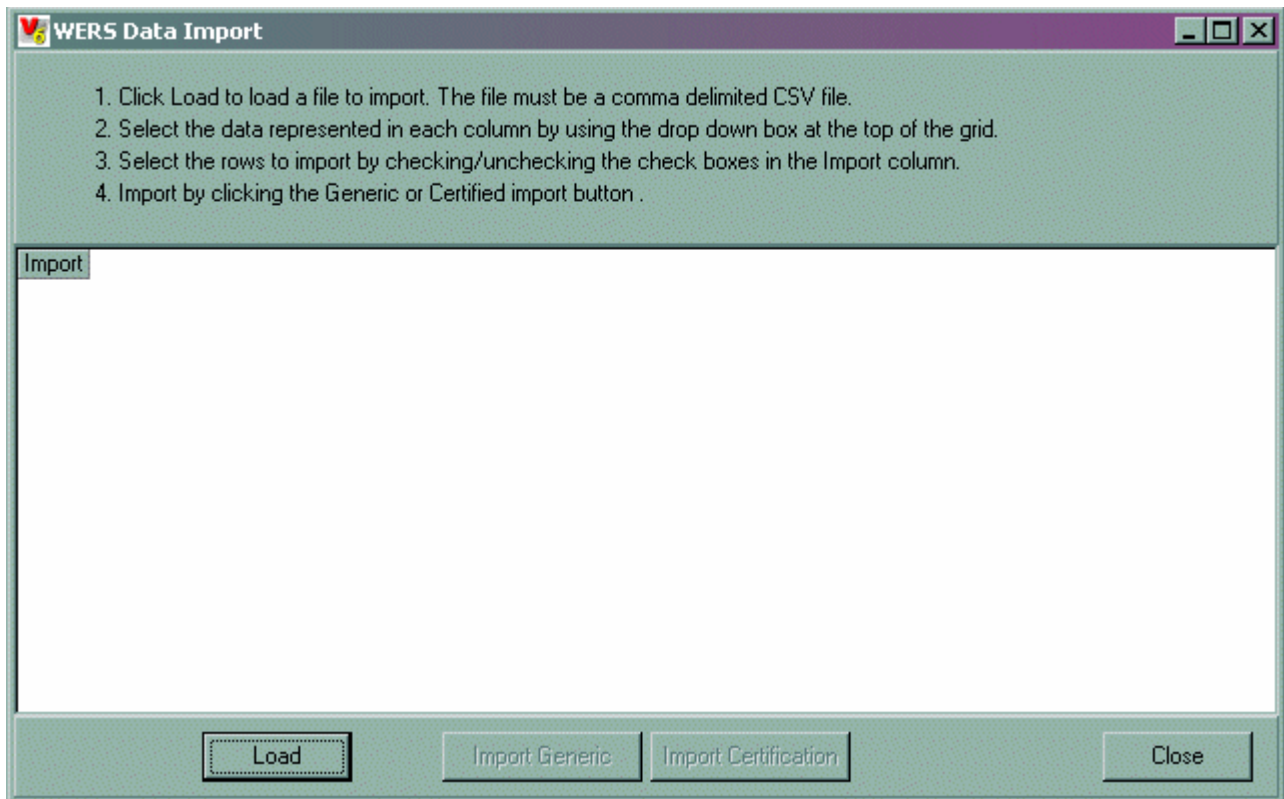
License	<p>The WERS module is usually bundled together with the AS1288-2006 license, but either WERS or AS1288-2006 can be licensed separately due to the fact that AS1288 is a statutory Australian Government legislation, whereas WERS is not.</p>
Disclaimer	<p>Because of this separation, WERS results can thus only be claimed and used by WERS members. Upon registration of WERS within V6, a disclaimer will display, along with Accept and Decline buttons. This message should display in the same manner for any later renewals of the WERS module.</p> <p>Once the Accept button has been selected, an email will be sent to a nominated email address with the V6 Machine Code from the accepting license. The nominated email address is: info@wers.net</p> <p>The disclaimer message will read:</p> <p>"By activating the WERS component of this software I confirm that I am a current WERS member with approved access. WERS is a proprietary scheme whose members agree to a formal code of conduct and participate in an annual audit. WERS results can only be claimed and used by WERS members."</p>
Registration in V6	<p>When either the AS1288-2006 and WERS modules are activated within V6, they will appear in the Setup Registration dialog, as below:</p>  <p>If not activated, then they will NOT be visible.</p>
Import	<p>The import facility can be accessed by selecting Setup WERS Import. Generic or test data can be imported. The files to import will be supplied by the AWA. See the section called 'WERS Import' for more on this.</p>
Associations	<p>The WERS data must be associated with V6 Fills and Frame Types for V6 to report WERS information. The association screen can be accessed by selecting Setup WERS Associations. From there you can connect/associate WERS data to V6 objects by clicking on the Associate button. See the section called 'WERS</p>

	Association' for more on this.								
Pressure Table	If a V6 database does not have the AS1288-2006 license activated, then the Pressure Table configuration under Setup Options is unavailable. Quote Defaults will still be able to see Pressure Table fields.								
Quote Items	WERS data is also associated on the Quote Item tab. See the section 'WERS Quote Items' for more on this.								
WERS Reports	<p>There are two specific reports set up in the Quotes section of Reporting: WERS1 and WERS2.</p> <p>WERS1 has been amended to include Stars Ratings in a different format than originally proposed. The previous rating system used numerics between 1 and 5 with 0.5 increments (i.e. 1.5, 2.0, 2.5 etc). This has now changed to a Alpha rating (i.e. A, AAB)</p> <div style="border: 1px solid black; padding: 10px; margin: 10px 0;"> <p>A translates to one full (coloured in) star B translates to one half (blank in) star</p> <table style="width: 100%; border-collapse: collapse;"> <tr> <td style="border-right: 1px solid black; padding: 5px;">★</td> <td style="padding: 5px;">★★★★</td> </tr> <tr> <td style="border-right: 1px solid black; padding: 5px;">★★★★☆</td> <td style="padding: 5px;">★★★★☆</td> </tr> <tr> <td style="border-right: 1px solid black; padding: 5px;">★★</td> <td style="padding: 5px;">★★★</td> </tr> <tr> <td style="border-right: 1px solid black; padding: 5px;">★★☆</td> <td style="padding: 5px;">★★★</td> </tr> </table> </div> <p>WERS2 displays the Heating and Cooling Improvement as a set of Percentage figures.</p>	★	★★★★	★★★★☆	★★★★☆	★★	★★★	★★☆	★★★
★	★★★★								
★★★★☆	★★★★☆								
★★	★★★								
★★☆	★★★								
SPR's and Work Items affected	THI-17598 THI-23127								

WERS Import

The user must have the AS1288-2006 license (and/or the WERS license if wanting to use one but not both modules) to gain access to WERS functionality.

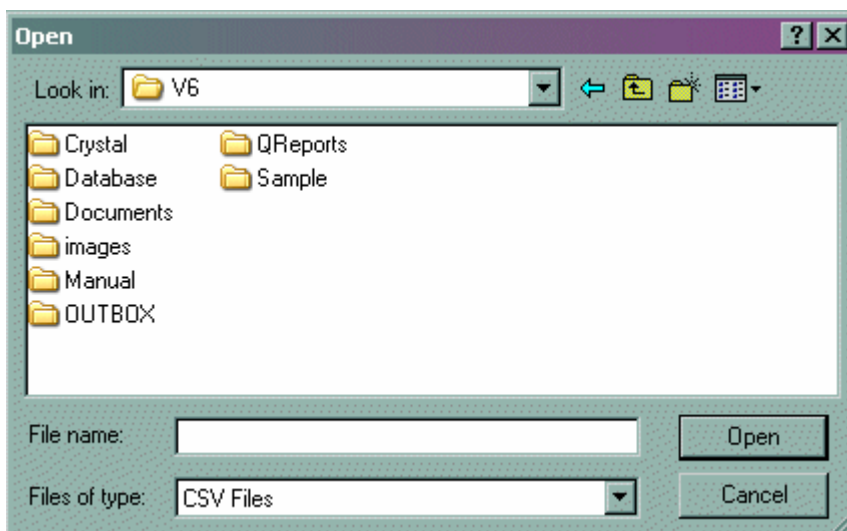
The WERS data import utility can be accessed by choosing **Setup|WERS|Import** from the main menu. The WERS Data Import dialog will be displayed as follows.



On the dialog there are some instructions at the top to guide the user. The instructions are:

Click **Load** to load a file to import. The **Open** dialog will display.

Browse to the directory, locate the file to be loaded, then click **Open**. The file must be a comma delimited CSV file.



1. Select the data represented in each column by using the drop down box at the top of the grid.
2. Select the rows to import by checking/unchecking the check boxes in the 'Import' column.
3. Import by clicking the **Generic** or **Certified** import button.

The Import/Load dialog looks like this:

WERS Data Import

1. Click Load to load a file to import. The file must be a comma delimited CSV file.
2. Select the data represented in each column by using the drop down box at the top of the grid.
3. Select the rows to import by checking/unchecking the check boxes in the Import column.
4. Import by clicking the Generic or Certified import button .

Import	Col 18	Col 19	Col 20	Col 21	Col 22	Col 23	Col 24	Col 25
	SHGCw	Tvw	Air Inf	* None *	* None *	* None *	* None *	* None *
<input type="checkbox"/>	SHGC	Tv	AI		SHGCLOW	SHGCHigh	HeatStar	CoolStar
<input checked="" type="checkbox"/>	0.6783	0.536	0		0.591489	0.722931	4	1
<input checked="" type="checkbox"/>	0.6783	0.536	0		0.5724603	0.6996737	4	1.5
<input checked="" type="checkbox"/>	0.3355	0.204	5		0.4029435	0.4924865	3.5	2.5
<input checked="" type="checkbox"/>	0.6783	0.555	0		0.2662092	0.3253668	3	3
<input checked="" type="checkbox"/>	0.6783	0.555	0		0.3242466	0.3963014	3.5	3
<input checked="" type="checkbox"/>	0.6783	0.545	0		0.3082023	0.3766917	3	3
<input checked="" type="checkbox"/>	0.6783	0.545	0		0.4235616	0.5176864	4.5	2.5
<input checked="" type="checkbox"/>	0.57	0.628	0.1		0.4149027	0.5071033	4.5	2.5
<input checked="" type="checkbox"/>	0.547	0.592	0.36		0.3613194	0.4416126	5	3
<input checked="" type="checkbox"/>	0.585	0.638	0.04		0.4480569	0.5476251	5.5	3
<input checked="" type="checkbox"/>	0.6	0.665	2.81		0.4424787	0.5408073	5.5	3
<input checked="" type="checkbox"/>	0.646	0.726	1.33		0.4723776	0.5773504	6	3
<input checked="" type="checkbox"/>	0.527	0.563	0.98		0.4409298	0.5389142	6	3
<input checked="" type="checkbox"/>	0.589	0.65	0.84		0.394047	0.481613	6	3.5
<input checked="" type="checkbox"/>	0.646	0.726	1.33		0.4433823	0.5419117	6.5	3.5
<input checked="" type="checkbox"/>	0.64	0.72	5		0.697257	0.852203	3	0.5
<input checked="" type="checkbox"/>	0.63	0.72	5		0.6839541	0.8359439	3	0.5
<input checked="" type="checkbox"/>	0.662	0.735	0.1		0.6741333	0.8239407	3	0.5

Load Import Generic Import Certification Close

Column Format

The number of columns extends to 25. These are:

Column 01 Date
 Column 02 Prime Die Holder
 Column 03 Window ID
 Column 04 FrameID
 Column 05 Frame Description
 Column 06 Window Type
 Column 07 Material
 Column 08 Glazing Type
 Column 09 Residential (Y/N)
 Column 10 Commercial (Y/N)
 Column 11 Glazing ID
 Column 12 Glazing Description
 Column 13 Cool Stars (Rating)
 Column 14 Heat Stars (Rating)
 Column 15 Cool Perc %
 Column 16 Heat Perc %
 Column 17 Uw/Uval
 Column 18 SHGCw/SHGC
 Column 19 Tvw/Tv
 Column 20 AirInf
 Column 21 -
 Column 22 SHGCLOW
 Column 23 SHGCHigh
 Column 24 HeatStar (numeric)
 Column 25 CoolStar (numeric)

Notes:

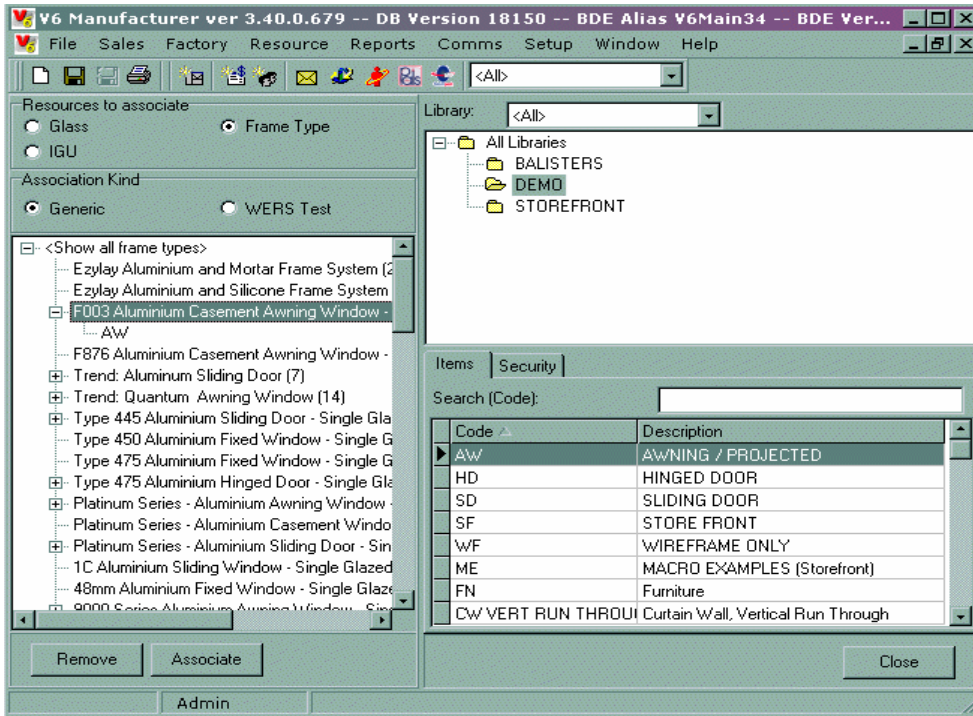
- The WERS import data should be saved in CSV format (use Excel or a text file). Data should be read in as rows. If using Excel, any multiple sheets should be separated as individual CSV files. The Import process will not handle multi sheet spreadsheets.
- Once you have the CSV file saved, click **Load** and find/select the CSV file. The file data should appear in the grid (as per the above screenshot).
- The second row of the grid (colored white), contains drop down boxes which are used to identify the data columns required by V6. These are listed in the 'Column Format' section (above).
- Each item must be selected once and once only. V6 will attempt to automatically select the correct columns according to the latest known file format. The automatic detection may not work properly pending file format changes.
- Some rows do not contain valid data, for instance column headers and empty lines. You can exclude these rows from the import process by unchecking the box in the Import column. All rows to be imported will be highlighted in green.
- Select either the Generic or Certified Import option to complete the Import process. Before V6 attempts the import V6 will validate your selections. If there are any problems with invalid data or invalid column type selections then V6 will show an error message with details about the condition that caused the error. If the Import process completes successfully V6 will display a notification to this effect together with the number of rows imported.
- If a Rating ID already exists in the database then the existing information associated with the Rating ID will be updated with the information imported from the file.

SPR's affected: THI-17959, THI-23127

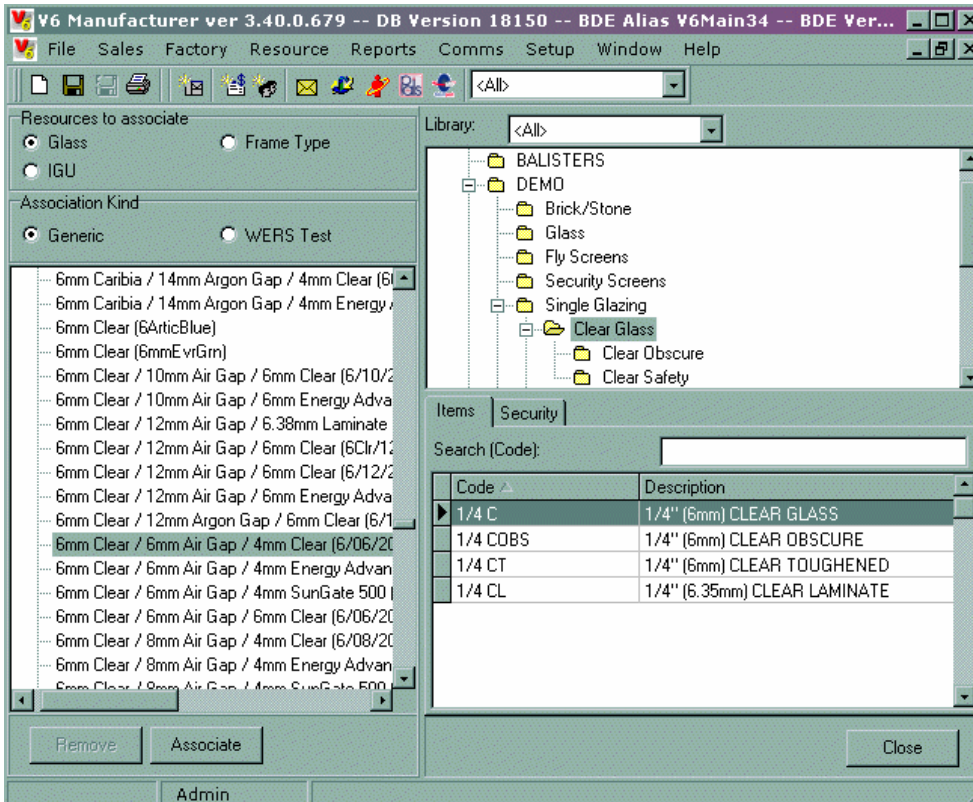
WERS Association

The WERS data must be associated with V6 Fills and Frame Types for V6 to report WERS information. The association screen can be accessed by selecting **Setup|WERS|Associations**. Pick either of three:

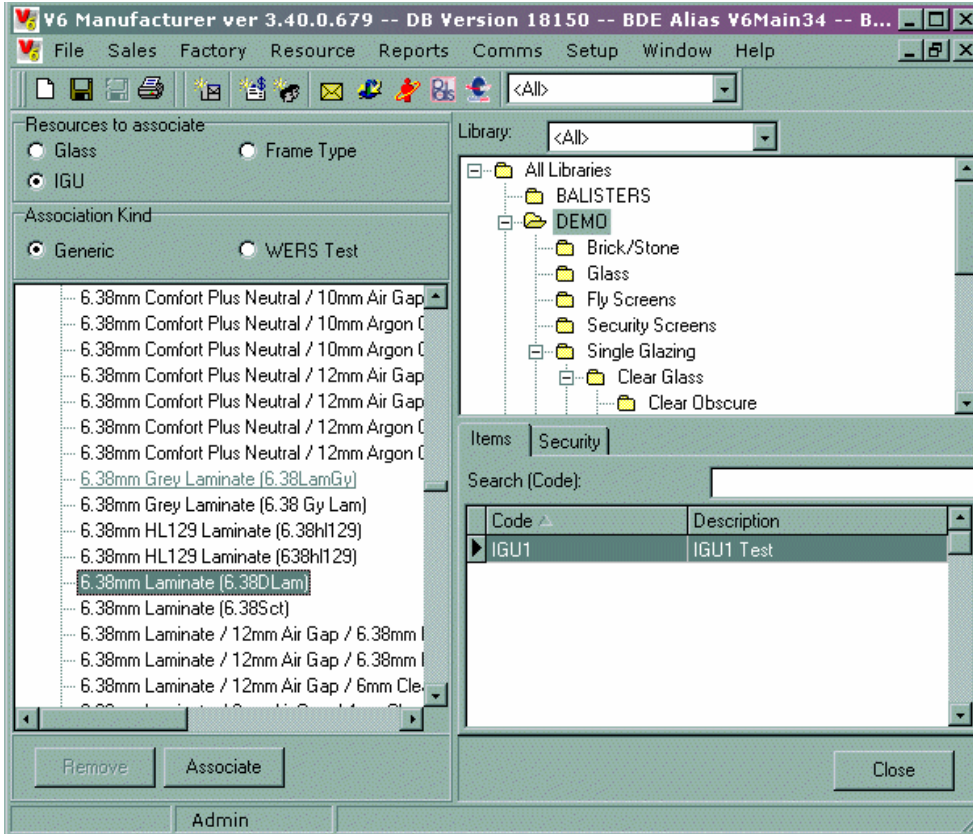
Frame Types



Fills (Glass)



or IGU's.



In the top left corner you can choose the associations you would like to make: **Glass**, **Frame Type** or **IGU**. The tree on the left side shows all available WERS data and current associations displayed underneath in the section 'Association Kind'.

The top right side of the screen shows a family browser. The bottom right shows the items belonging to a particular family that you have highlighted from above.

To create an association select a WERS data item from the tree on the left, then select a resource item from the family browser from the bottom right, then click the **Associate** button. You can select multiple resources by using shift and ctrl.

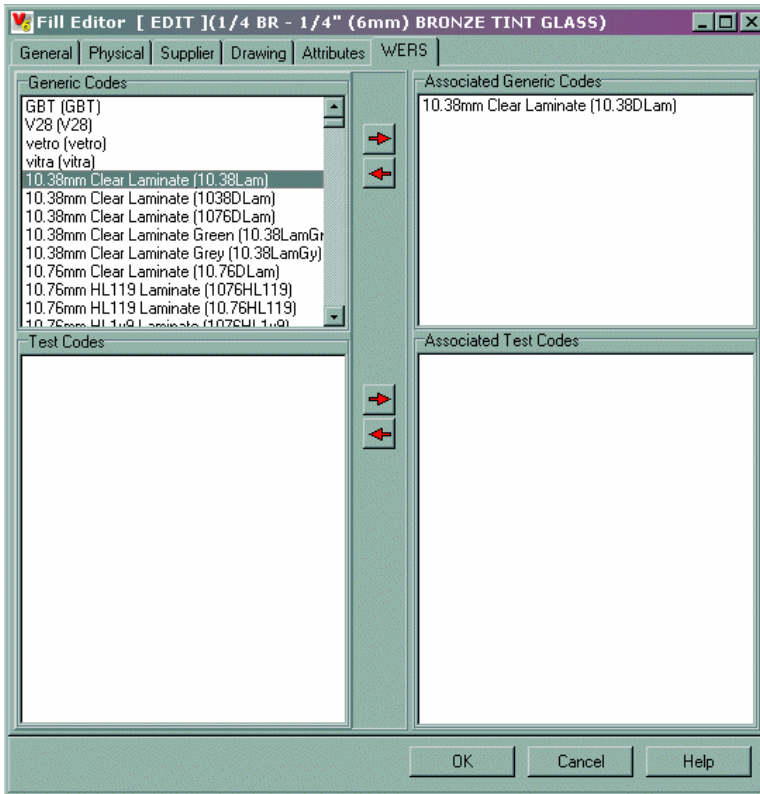
To remove an association select the association in the tree on the left side and click the **Remove** button. You can also remove all associations from a specific WERS data item by selecting the item in the tree and clicking remove.

All association changes are saved immediately. Once you have completed associations you can just close this screen.

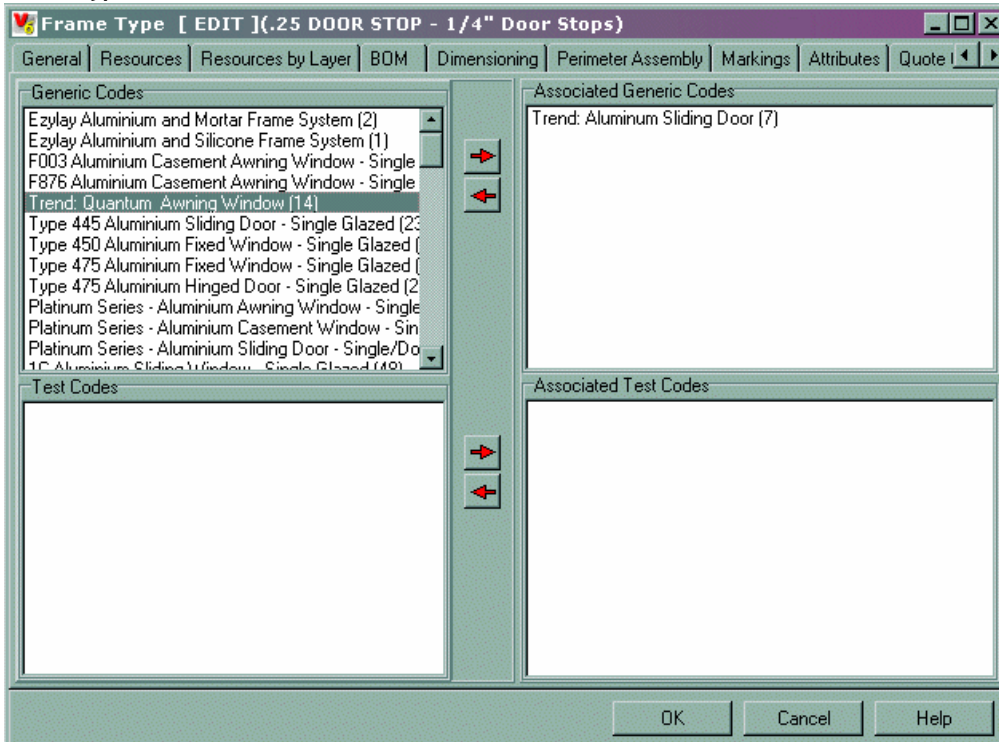
Making Associations in Fill and FrameType Editors

Associations can also be done on the Fill Editor and Frame Type editor. You will notice the WERS tab. If you select this tab you will see two sections, one for generic and one for test data. All available WERS data is displayed on the left and all associations on the right for their respective sections. Use the arrow keys to create or remove associations.

Fill Editor:



FrameType Editor:

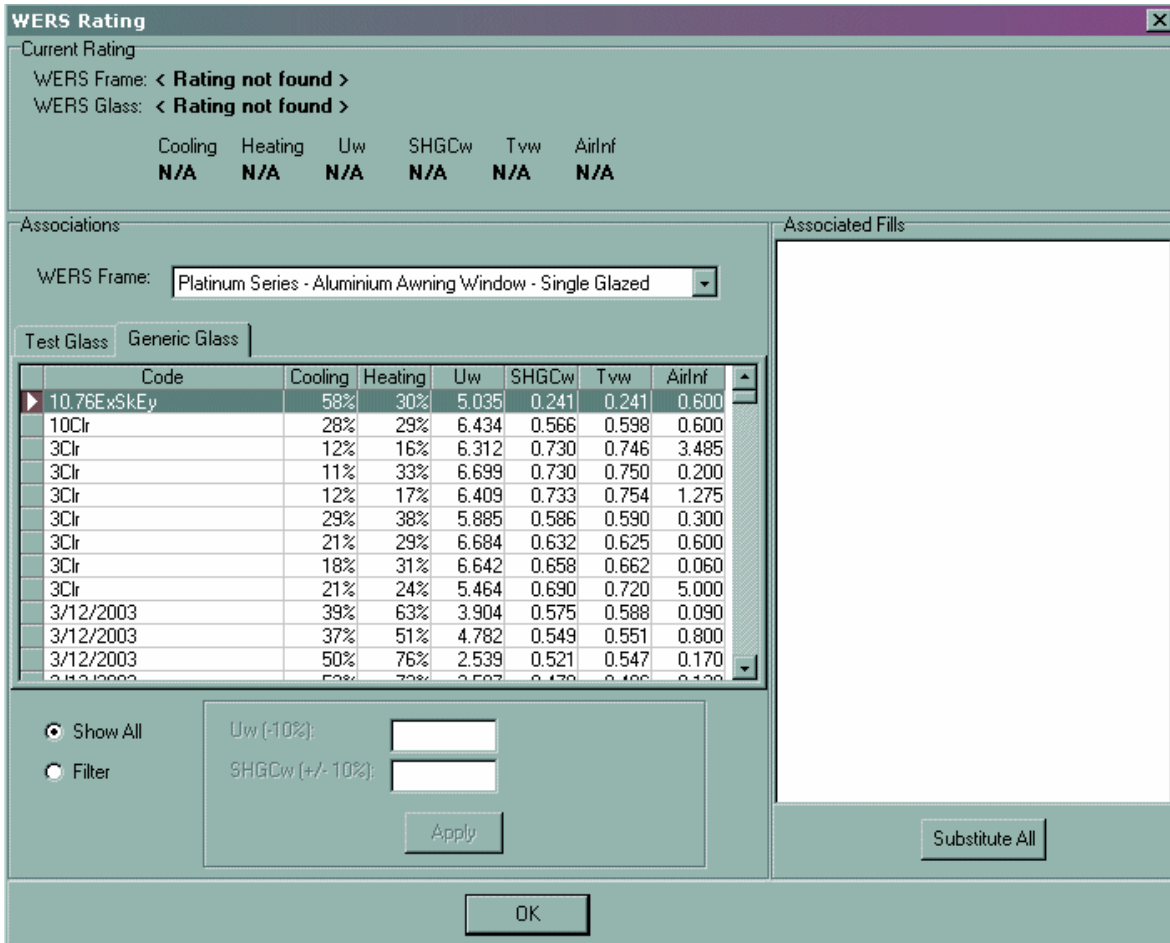


Note: You can associate a Fill with multiple WERS Glass items but a Frame Type can only be associated with one WERS frame item.

SPR's affected: THI-23127

WERS - Quote Items

If the V6 User holds a AS1288 module license to use WERS within V6, the WERS button becomes active on the options tab of Quote Items. Clicking this button will display the WERS information related to the frame item. At the top, the associated WERS frame item is displayed with the WERS glass that is common between all fills in the frame. The associated WERS values are displayed as well.



The table in the middle displays all the WERS glass and test values associated with the current frame. You can switch between the **Test Glass** and **Generic Glass** values by clicking the buttons above the table.

On the right all the **Associated Fills** with the currently selected WERS test information is displayed. You can select a Fill from the list and click the Substitute button to replace all Fills in the frame with the selected Fill. This functionality works exactly like the substitution done via Light By Light Glazing.

There is also a filtering tool at the bottom. Select **Filter** to enable the filtering tool. Enter a **Uw** and a **SHGCw** value and click **Apply**. The filtering tool will only display values that fall within the ranges displayed. The ranges are 90% to 100% of the Uw value specified and 90% - 110% of the SHGCw value specified.