



WERs Module  
Instruction Manual

## V6 Xtend- WERS Module

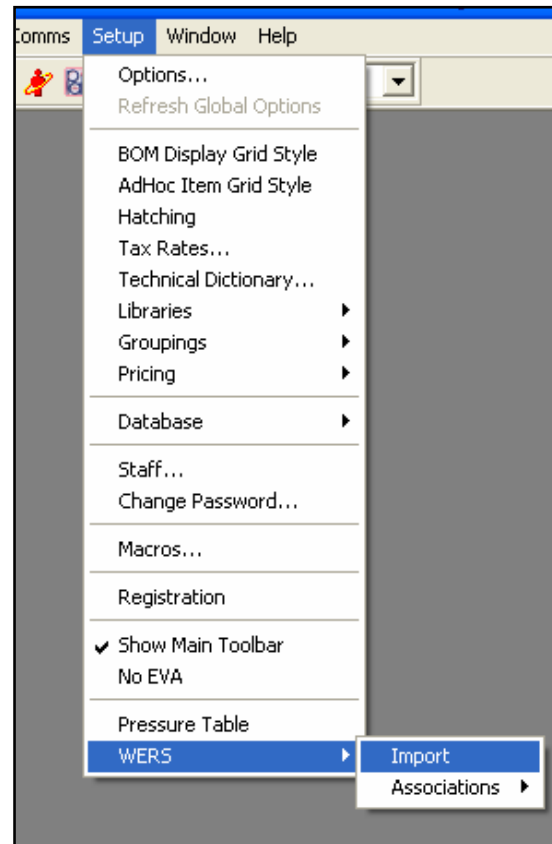
---

This manual will show you how to import your WERS test results into V6 and produce reports on the WERS ratings for various combinations of Frame Type & Glazing materials.

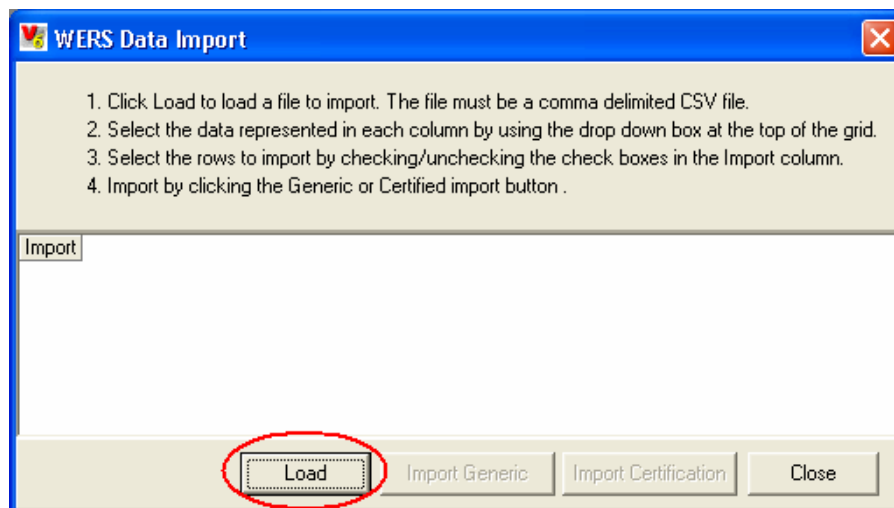
- |  |   |
|--|---|
| 1. Importing Test Results                                    | 2 |
| 2. Associating the frame & glass codes with your V6 database | 5 |
| 3. Using WERS within a quote                                 | 7 |

# 1. Importing your test results

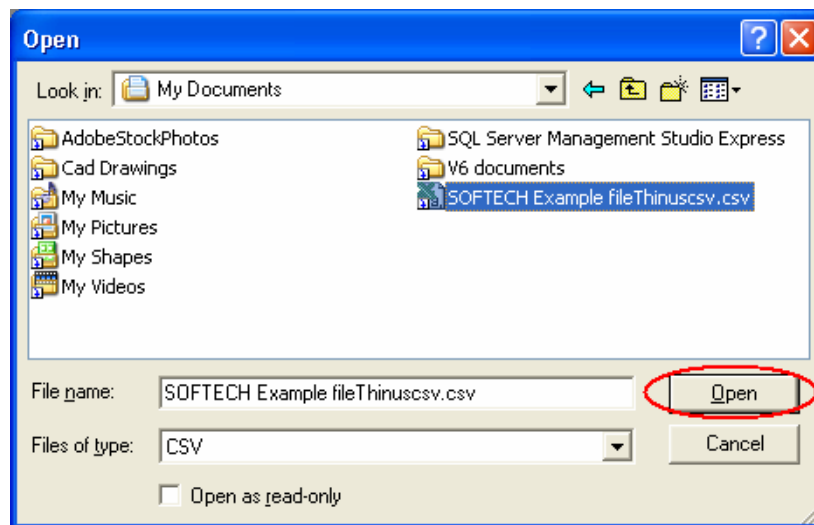
1. Go to SETUP > WERS > IMPORT



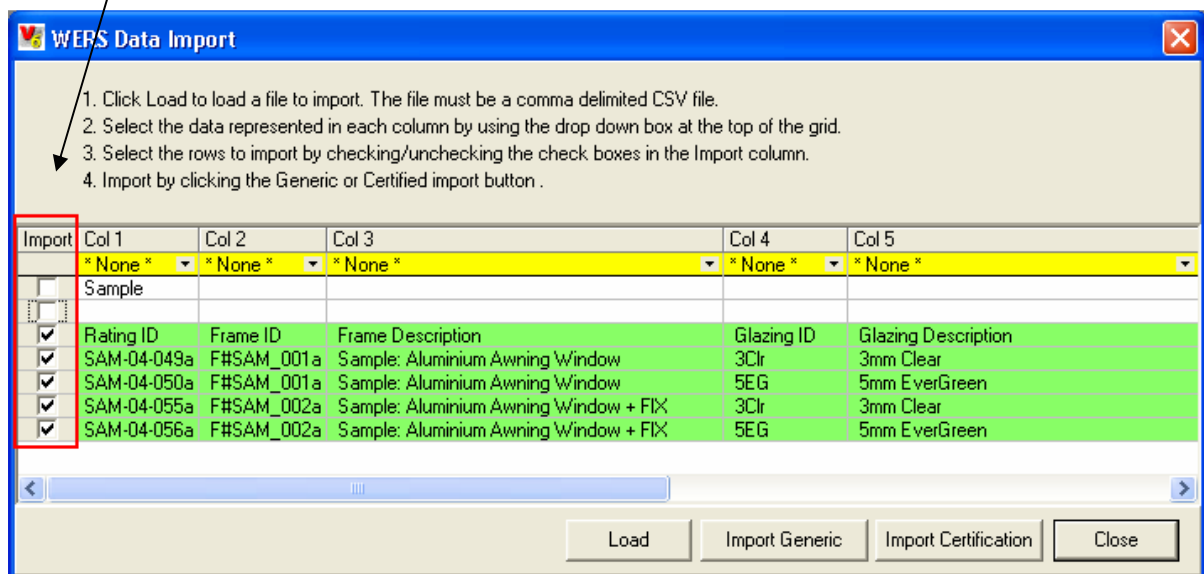
2. Upload your .csv file by Clicking LOAD



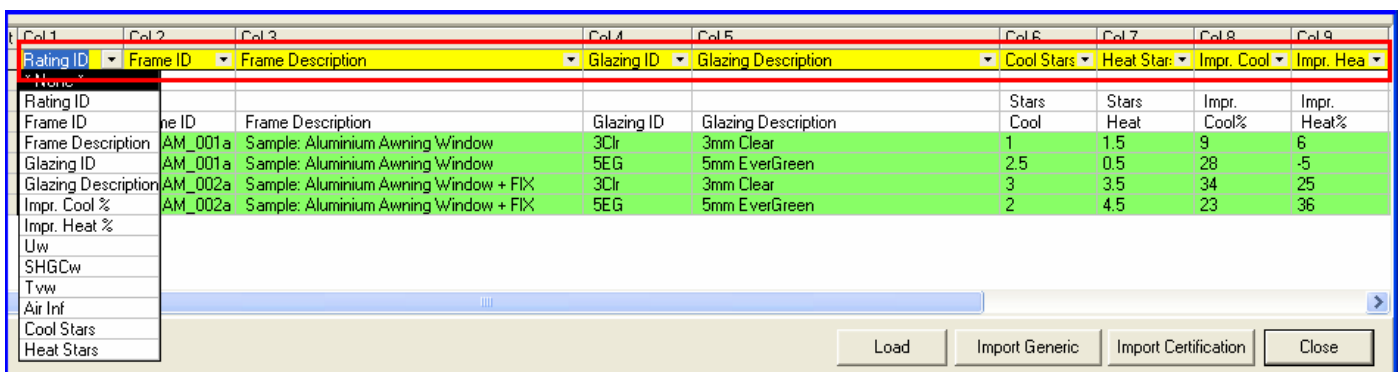
3. Locate your .csv file & click OPEN



4. Select the rows to import by checking/unchecking the boxes in the Import column. Be sure not to import any blank or heading rows.



5. Use the drop-down menus to select the column headings



6. Once all Headings are complete, click Import Certification

**WERS Data Import**

1. Click Load to load a file to import. The file must be a comma delimited CSV file.  
 2. Select the data represented in each column by using the drop down box at the top of the grid.  
 3. Select the rows to import by checking/unchecking the check boxes in the Import column.  
 4. Import by clicking the Generic or Certified import button.

Import	Col 1	Col 2	Col 3	Col 4	Col 5	Col 6	Col 7	Col 8	Col 9
	Rating ID	Frame ID	Frame Description	Glazing ID	Glazing Description	Cool Stars	Heat Stars	Impr. Cool	Impr. Heat
<input type="checkbox"/>	Sample					Stars	Stars	Impr.	Impr.
<input type="checkbox"/>	Rating ID	Frame ID	Frame Description	Glazing ID	Glazing Description	Cool	Heat	Cool%	Heat%
<input checked="" type="checkbox"/>	SAM-04-049a	F#SAM_001a	Sample: Aluminium Awning Window	3Clr	3mm Clear	1	1.5	9	6
<input checked="" type="checkbox"/>	SAM-04-050a	F#SAM_001a	Sample: Aluminium Awning Window	5EG	5mm EverGreen	2.5	0.5	28	-5
<input checked="" type="checkbox"/>	SAM-04-055a	F#SAM_002a	Sample: Aluminium Awning Window + FIX	3Clr	3mm Clear	3	3.5	34	25
<input checked="" type="checkbox"/>	SAM-04-056a	F#SAM_002a	Sample: Aluminium Awning Window + FIX	5EG	5mm EverGreen	2	4.5	23	36

Buttons: Load, Import Generic, **Import Certification**, Close

**V6 Manufacturer ve...**

4 rows successfully imported!

OK

7. Click OK & close the window.

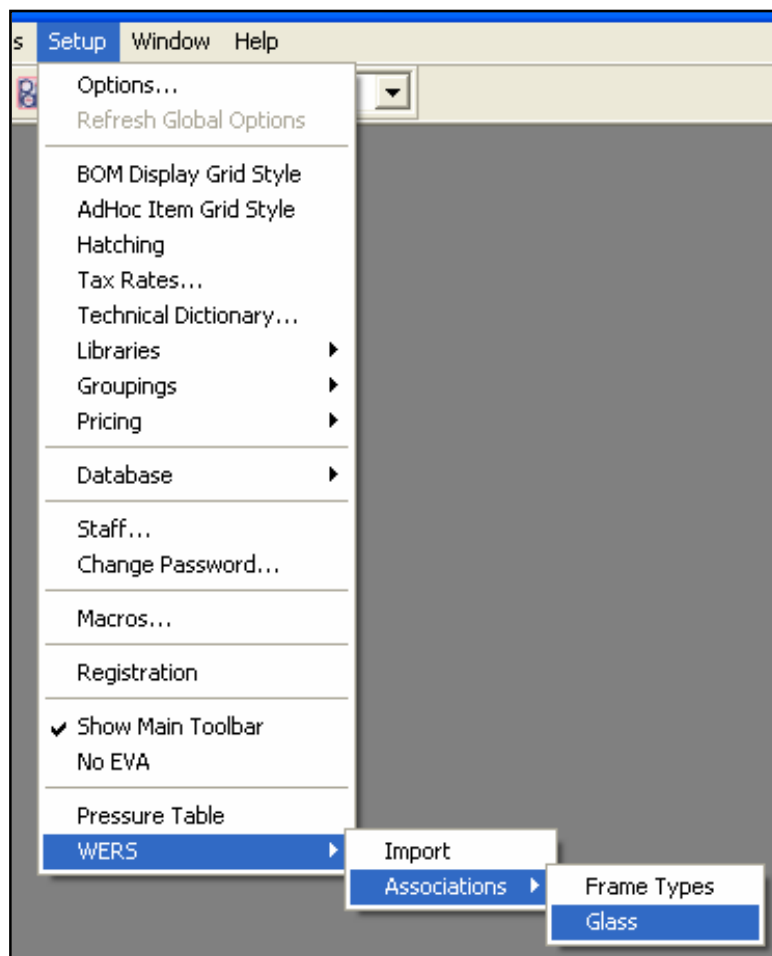
## 2. Associate the Frame & Glass codes with your V6 Database

The WERS data must be associated with V6 glass & frame types in order for V6 to report WERS information.

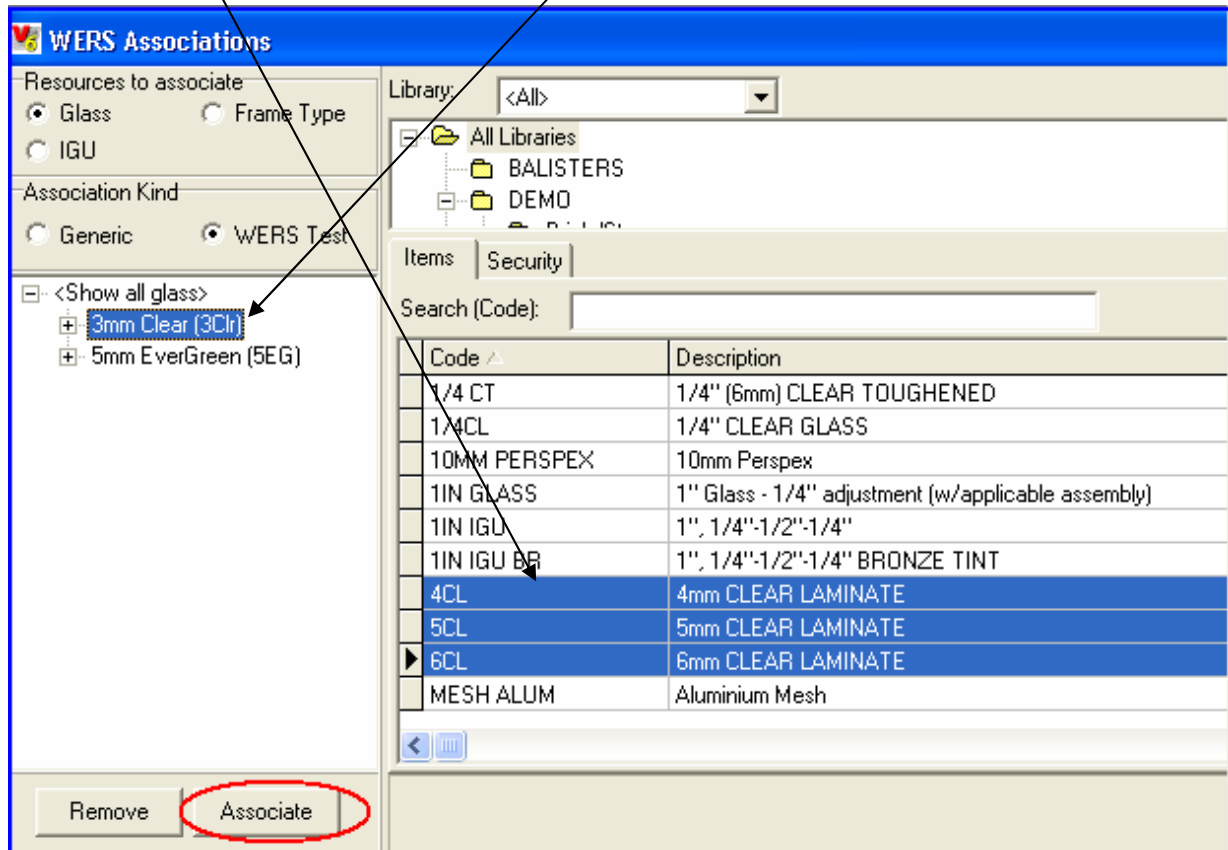
In many cases, one test result is reflective for multiple glass types.

In this case, you can associate one glass type from your .csv file with multiple glass types in V6.

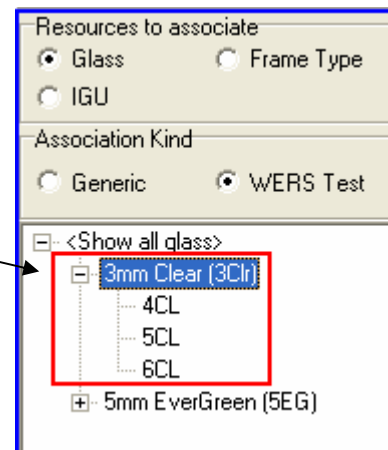
1. Go to SETUP > WERS > ASSOCIATIONS > GLASS



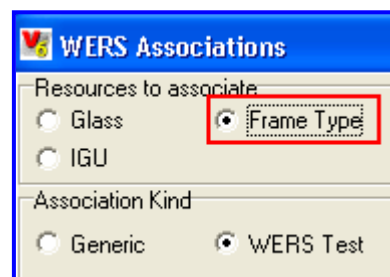
2. Select V6 Glass type/s on the left, then the tested glass on the right to associate them with & click Associate.



The glass types have now been associated with the test results

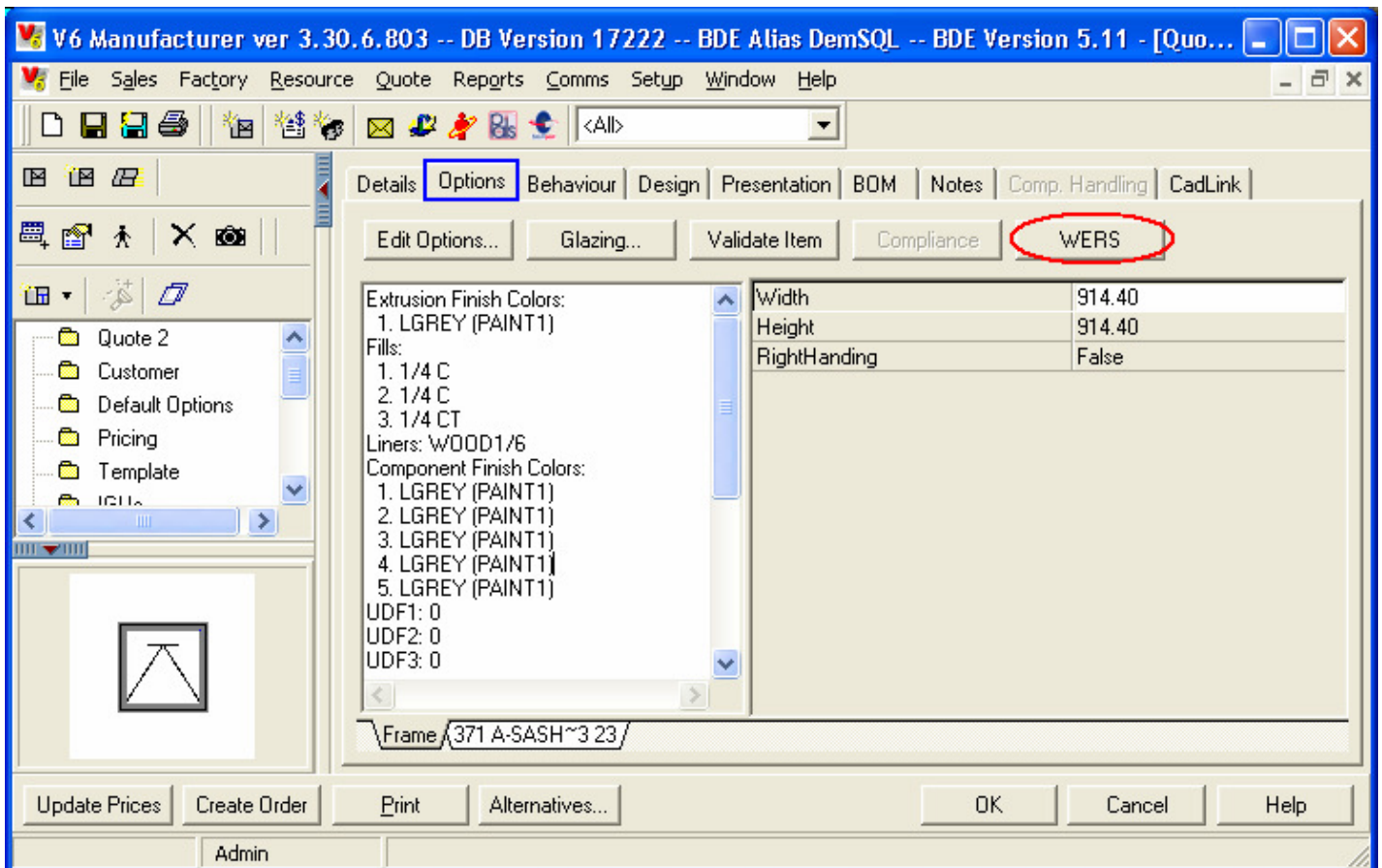


3. Select FRAME TYPE & repeat step 2 to associate your frames in the same way.

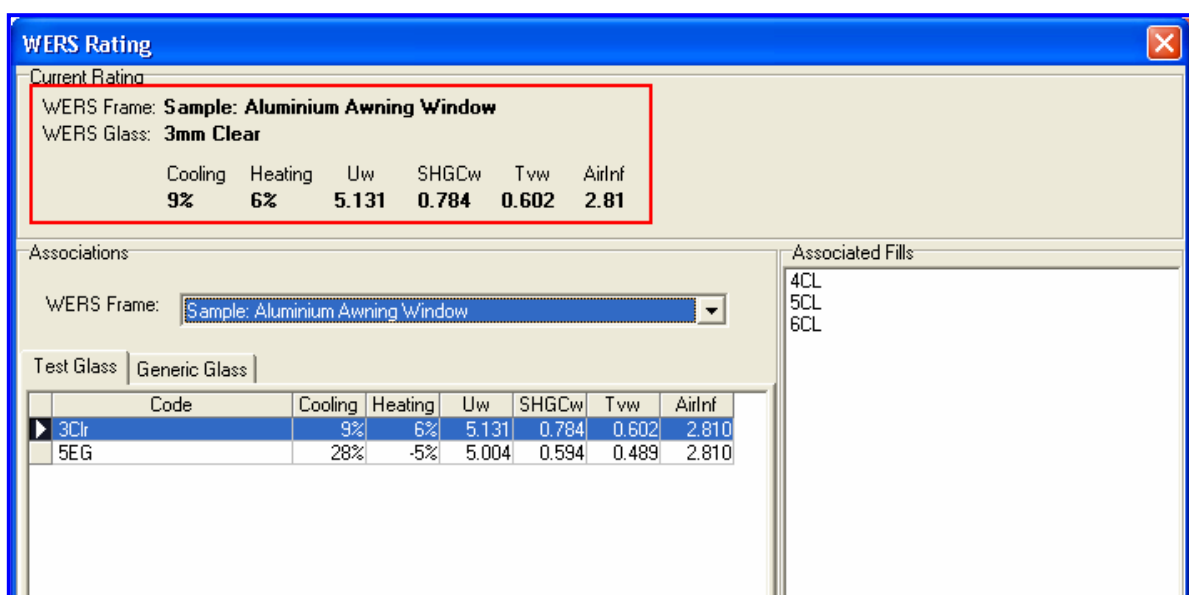


### 3. Using WERS within a Quote

When in a quote, the WERS button is available on the OPTIONS tab



Clicking this button will display the WERS information relating to the frame item. The frame type is displayed at the top, along with the WERS glass type & the associated WERS Values.



You can change the glass type in this screen in order to give you a better rating.

**WERS Rating** ✕

**Current Rating**

WERS Frame: **Sample: Aluminium Awning Window**

WERS Glass: **3mm Clear**

Cooling	Heating	Uw	SHGCw	Tvw	AirInf
<b>9%</b>	<b>6%</b>	<b>5.131</b>	<b>0.784</b>	<b>0.602</b>	<b>2.81</b>

**Associations**

WERS Frame: Sample: Aluminium Awning Window

Test Glass Generic Glass

Code	Cooling	Heating	Uw	SHGCw	Tvw	AirInf
▶ 3Clr	9%	6%	5.131	0.784	0.602	2.810
5EG	28%	-5%	5.004	0.594	0.489	2.810

Show All  
 Filter

Uw (-10%):

SHGCw (+/- 10%):

**Associated Fills**

- 4CL
- 5CL
- 6CL